

TYDD ST GILES PARISH COUNCIL

Parrock View, 358 High Road, Newton-in-the-Isle, PE13 5HS

Tel 01945 870083 ~ Mobile 07932 191050 ~ Email clerk@tyddstgilesparishcouncil.org.uk

Clerk D Gibbs

4th July 2021

To Members of the Public and Press

You are invited to attend the next meeting of Tydd St Giles Parish Council, which will be held in the Community Centre on **Thursday 8th July 2021 at 7.30pm**, for the purpose of transacting the following business.

Members of the public and press are invited to attend this meeting. A period not exceeding 15 minutes is made available at the beginning of the meeting, where residents so require, to enable a Public Forum to take place.

Yours sincerely

D Gibbs

Clerk/Proper Officer

A G E N D A

All members are reminded that they need to declare any personal or prejudicial interest and reason before an item discussed at this meeting, under the Model Code of Conduct Order 2001 No 3576.

Apologies for Absence

To receive and consider apologies for absence on behalf of those members not present.

017/21 Chairman's Announcements

To receive such announcements as the Chairman may wish to make to the Council.

018/21 Urgent Items

The Chairman to report upon additional items for consideration which the Chairman deems urgent by virtue of the special circumstances now specified.

019/21 Confirmation of Minutes

- a) *To consider and confirm the minutes of the Parish Council meeting held on 20th May 2021*
- b) *To consider and confirm the minutes of the Planning Committee meeting held on 3rd June 2021*
- c) *To consider and confirm the minutes of the Planning Committee meeting held on 28th June 2021*

020/21 Matters Arising

To receive updates on the following items:

- a) *Defibrillators - minute 004/21 (a)*
- b) *Sutton Bridge Power Fund - minute 004/21 (b)*
- c) *Parish Council e-mail accounts - minute 004/21 (c)*
- d) *Green Dog Walker scheme - minute 004/21 (d)*
- e) *Drainage Issues - minute 004/21 (e)*
- f) *Parking in Church Lane - minute 004/21 (f)*

- g) *Dog Waste in Eaudyke Bank and Fold Lane - minute 004/21 (g)*
- h) *Vacancy for a Parish Councillor - minute 009/21*
- i) *20's Plenty for Cambridgeshire - minute 013/21*

021/21 Police Matters

To receive a report on policing matters in the area since the last meeting.

022/21 Cambridgeshire County Councillor Report

To receive a report from Cllr Simon King.

023/21 Fenland District Councillor Report

To receive reports from Cllrs Samantha Clark and Chris Seaton.

024/21 Parishioner Issues

To discuss the following matters brought to the attention of the Council by Parishioners:-

- a) *Speedwatch*
- b) *Parking at Church Lane, Hockland Road, Kirkgate junction*

025/21 Local Highway Improvements

- a) *To discuss the unsuccessful application for 2021/22.*
- b) *To consider projects suitable for future submission.*

026/21 Working Groups

To receive reports from the Working Groups:-

- a) *Communications*
- b) *Play Area*

027/21 Data Gathering and Digital Mapping

To report on progress in gathering information relevant to the Parish, the mapping of Parish Council assets and options for storage and display of data.

028/21 Community Centre

- a) *To consider and approve a draft protocol between the Council and the Community Centre Management Committee.*
- b) *To discuss future capital projects requiring support from the Council.*

029/21 Planning

To consider the following application and agree a response to the planning authority:

F/YR21/0519/F - Erect 1 x dwelling (2-storey 3-bed) with garage at Plot 4, Land West of Magnolia Cottage, Kirkgate, Tydd St Giles (re-consultation)

030/21 Correspondence

To report on correspondence received as follows:

Cambridgeshire and Peterborough Combined Authority updates

Cambridgeshire County Council re roadworks and events

- re Middle Broad Drove closure 10 August

- re Holiday Activity and Food programme

- re Local Cycling and Walking Infrastructure Plan consultation

FDC re Newgate Road sewage treatment plant

- re Community Safety Partnership cyber security training for children

Cambridgeshire & Peterborough Against Scams Partnership re current scams

Cambridgeshire & Peterborough Association of Local Councils re training courses

MVV Medworth re incinerator consultation

Alzheimer's Society re Dementia Connect Cambridgeshire

Cambridgeshire ACRE re Cambridgeshire Home Energy Support Service

031/21 Finance

- a) *To receive an updated financial statement for the period to the end of June.*
- b) *To note the following sums received since the last meeting:*
- | | |
|---|------------|
| Fenland District Council (concurrent functions grant) | £ 2,791.00 |
| Barclays Bank (interest)..... | £ 0.82 |
- c) *To ratify the following payments issued since the last meeting:*
- | | |
|---|----------|
| D Gibbs (salary June) | £ 716.03 |
| Fenland District Council (bins)..... | £ 93.38 |
| Information Commissioner (registration fee) | £ 35.00 |
- d) *To approve the following payments:*
- | | |
|---|------------|
| D Gibbs (salary July) | £ 716.03 |
| D Gibbs (expenses)..... | £ 445.79 |
| Fenland District Council (street light maintenance) | £ 5,238.45 |
| | £ 6,400.27 |
| CGM Group (East Anglia) Ltd (grounds maintenance)..... | £ tbc |
- e) *To revise the figure for payments to Fenland District Council for Community Centre bin emptying from £86.74 to £93.38 per quarter.*

032/21 Reports from Members

To receive the following updates from members of the Council:

- a) Highways - Cllr Mathias
- b) Street Lights - Cllr Luck
- c) Churchyard - Cllr Doyle
- d) Trees - Cllr Doyle
- e) Foul Anchor - Clerk
- f) Community Centre - Cllr Carter
- g) Tydd Waterway Path - Clerk

033/21 Date of Next Meeting

To confirm the date and time of the next meeting of the Council:
Thursday 9th September at 7.30pm

TYDD ST GILES PARISH COUNCIL

Minutes of the Annual Meeting of Tydd St Giles Parish Council held in the Community Centre on Thursday 20th May 2021

Present - Cllr T Doyle (Chairman), Cllr C Brooks, Cllr M Carter, Cllr B Luck, Cllr G Mathias, Cllr A Renshaw, Cllr S King (CCC), D Gibbs (Clerk), D Grainger, M Martin, P Sharp, E Sharpe (Parishioners)

Apologies for Absence - Cllrs S Clark and C Seaton (FDC)

Public Time - The Chairman reported that he had received a letter from a resident of Church Lane expressing concern regarding a number of issues at that location and elsewhere in the village. The Chairman will contact the resident to discuss these matters and report to the next meeting any requiring action from the Council.

001/21 Urgent Items

The Chairman summarised the achievements of the Council during a challenging year and set out the plans for the next year, inviting residents to get involved, either as a member of the Council or one of the new Working Groups.

002/21 Annual Meeting of the Council

- a) Election of Chair - Cllr Doyle was nominated by Cllr Mathias, seconded by Cllr Luck and duly elected. Members resolved to allow him to sign his declaration of acceptance at the end of the meeting.
- b) Election of Vice Chair - Cllr Mathias was nominated by Cllr Doyle, seconded by Cllr Luck and duly elected. Members resolved to allow him to sign his declaration of acceptance at the end of the meeting.
- c) Members reviewed and readopted the terms of reference for the Planning Committee.
- d) Members reviewed and confirmed the standing orders and financial regulations.
- e) The Clerk confirmed that the Council holds adequate insurance for all known risks with Royal and Sun Alliance, arranged through Community Action Suffolk, with a renewal date of 1 June on a three-year agreement from 2020.
- f) The Clerk reminded members that they hold subscriptions to the Cambridgeshire and Peterborough Association of Local Councils and to Cambridgeshire ACRE. Members resolved to continue both subscriptions.
- g) The register of assets has been updated to include recent purchases and the total value of assets now stands at £400,199.
- h) Members resolved to meet on the second Thursday of alternate months, namely 8 July, 9 September, 11 November, 13 January 2022, 10 March and 12 May.

003/21 Confirmation of Minutes

- a) RESOLVED - that the minutes of the meeting held on Thursday 11th March 2021 be agreed and signed as a true and accurate record.

- b) RESOLVED - that the minutes of the Planning Committee meeting held on Thursday 8th April 2021 be agreed and signed as a true and accurate record.
- c) RESOLVED - that the minutes of the Planning Committee meeting held on Thursday 29th April 2021 be agreed and signed as a true and accurate record.

004/21 Matters Arising

- a) Defibrillators - No progress possible at present.
- b) Sutton Bridge Power Fund - No update.
- c) Parish Council e-mail accounts - As it is still not possible for the Clerk to visit members' homes, this matter will be deferred again.
- d) Green Dog Walker scheme - No update.
- e) Drainage Issues - Hockland Road discussions are under way with Cambridgeshire Highways regarding the possibility of diverting pumped water directly into the chamber on the verge. The County Council has clarified the boundary issues in Kirkgate.
- f) Parking in Church Lane - members agreed to monitor pavement parking in Church Lane.
- g) Members agreed to monitor dog waste in Eaudyke Bank to ascertain whether an additional bin is required along the roadside or in the Golf Club. Fold Lane will also be monitored with a view to taking enforcement action if necessary.
- h) Members agreed to follow the progress of the County Council's new approach to the management of roadside verges, with a view to implementing it in the parish in the future.
- i) Members noted that the Local Highway Improvement application for 2021/22 in Hannath Road was not being recommended for funding.

005/21 Police Matters

The Chairman reported that he had attended an online meeting with the Wisbech Neighbourhood Sergeant and representatives of other parish councils. The parish representatives expressed the view that they would like to see more visible policing.

006/21 Cambridgeshire County Councillor Report

Cllr King stated that he was pleased to have been re-elected as County Councillor for the Roman Bank and Peckover division and promised to work hard for everyone. The County Council will now be run by a coalition of Liberal Democrat, Labour and independent councillors. There may be some changes to the committee structure, but Cllr King will continue to serve on the Highways and Transport Committee. Steve Cox, Executive Director: Place and Economy will oversee highways capital projects and improve project management. The Wisbech Access Strategy is back on the agenda, with the new A47/Broadend Road and Churchill Road/Weasenham Lane roundabouts, and improvements to the Elme Hall roundabout. The former mayor was an advocate of reopening the railway line to Wisbech and it is hoped that his successor will continue to promote this project. The additional funding of £30 million allocated by the previous administration for roads, pavements, verges and drains may now be diverted to other projects.

007/21 Fenland District Councillor Reports

In the absence of Cllrs Clark and Seaton, the Clerk presented their report. Most District Council meetings had been suspended due to the elections. The election of Nik Johnson as Mayor of the

Cambridgeshire and Peterborough Combined Authority might result in a change of direction for the authority, especially with the change of control at the County Council.

008/21 Parishioner Issues

- a) Bird scarers near Church Lane - Cllr King spoke to the landowner and the bird scarers were moved to a more acceptable location.
- b) Biomass hopper at Golf Club - A resident reported that a biomass boiler and fuel hopper had been installed at the Golf Club without planning permission. The hopper is an eyesore and the system is noisy in operation. A noise complaint has been submitted and is currently under investigation. Planning officers have also visited the site to discuss planning issues.
- c) Future expansion of Golf Club - A resident expressed concerns regarding the scale of development of the Golf Club and future expansion plans. All new proposals will be subject to public consultation in the usual way. The lockable post at the rear entrance to the Golf Club is no longer in use and the Council agreed to ask the site management to replace it to prevent vehicles leaving the site via Eaudyke Bank.

009/21 Vacancy for a Parish Councillor

Members discussed the forthcoming election for the remaining vacancy. The Notice has been published and the election, if required, will take place on Thursday 24 June. Members asked the Clerk to circulate details of the nomination process to all candidates who had expressed an interest in joining the Council.

010/21 Planning

Members considered the following application:-

F/YR21/0333/F - Erect a 2-storey side extension to existing dwelling including 3.4 metre high (approx) gates/brick wall to entrance and alterations to entrance driveway - West Barn, Broad Drove West, Tydd St Giles (re-consultation)

They noted that the issue of overlooking had not been addressed and restated their view that a single storey extension would be preferable. Members resolved not to support the revised application.

011/21 Working Groups

The Working Groups have met for the first time. Several members of the public have expressed an interest in joining the Groups. It is hoped that face-to-face meetings will commence in June.

012/21 Data Gathering and Digital Mapping

Cllr Luck reported that he is working on mapping the Council's assets, with the longer term aim of making the map available on the Council's website.

013/21 Correspondence

The Clerk outlined the correspondence received since the last meeting, including the following:-

Cambridgeshire County Council re roadworks and events, including closures of Hockland Road from 30 June to 2 July and Hannath Road from 6 to 8 July
- re Local Highway Improvement panel decisions
Galliford Try re Guyhirn roundabout works including weekend closure from 21 to 24 May
Cambridgeshire & Peterborough Association of Local Councils re internal audit service
- re training courses

FDC re Sport England grant of £224,500 for leisure centres
- re £4.5million Government grant with Clarion to make social housing greener
- re purchase of commercial property in Wisbech
- re Community Safety Partnership engagement event
- re loan shark training
- re independent remuneration panel review
Keep Britain Tidy re Great British Spring Clean 28 May to 13 June
Hunts Forum re Support Fenland
Cambridgeshire County Council re summer engagement
Cambridgeshire & Peterborough Against Scams Partnership re current scams
20's Plenty for Cambridgeshire re speed reduction proposal

Members asked the Clerk to add 20's Plenty to the agenda for the July meeting.

014/21 Finance

- a) Members approved the internal accounts for the 2020/21 financial year.
- b) Members reviewed and approved the Governance and Management Risk Assessment.
- c) Members approved the internal audit report. There were no matters requiring attention.
- d) Members reviewed and approved the Annual Governance Statement 2020/21 and authorised the Chairman to sign it.
- e) Members reviewed and approved the Accounting Statement 2020/21 and authorised the Chairman to sign it.
- f) Members resolved that the period for the exercise of public rights be from Monday 14 June to Friday 23 July.
- g) Members confirmed the appointment of Ivan Cooper as Internal Auditor for 2021/22.
- h) The following sum was received since the last meeting:-

Fenland District Council (precept).....	£ 6,000.00
---	------------

- i) The following payments were approved:-

D Gibbs (salary April and May)	£ 1,432.06
CAPALC (subscription).....	£ 468.68
Cambridgeshire ACRE (subscription)	£ 57.00
I Cooper (audit fee).....	£ 135.00
Cambridgeshire County Council (LHI contribution)	£ 528.00
CGM Group (East Anglia) Ltd (grounds maintenance).....	£ 829.25
North Level District IDB (drainage rates)	£ 482.15
James Joyce (tree work).....	£ 4,848.00
Business Services at CAS Ltd (insurance).....	£ 478.80
	<u>£ 9,258.94</u>

RESOLVED - that the above payments totalling £9,258.94 be approved for payment.

- j) RESOLVED – to authorise the following items for payment between meetings, each to be reported to the following meeting for ratification:-

Clerk salary £716.03 monthly (pay award pending)
 CGM Group - Recreation Ground grass cutting £62.76 + VAT fortnightly
 CGM Group - Churchyard grass cutting £110 + VAT fortnightly
 Fenland District Council (Community Centre bins) £86.74 quarterly

015/21 Reports from Members

- a) Highways - Annual routine inspection due next week.
- b) Street Lights - Two lights reported - PC2 Church Lane not working and PC2A Field Avenue on all day.
- c) Churchyard - Cllr Doyle reported that the planned tree works have been completed. Positive feedback received from neighbours.
- d) Trees - No further issues.
- e) Foul Anchor - Nothing to report.
- f) Community Centre - Cllr Carter reported that the Centre has reopened and the Bowls Club has returned. The shooting club will return shortly.
- g) Waterway Walk - No developments at present.
- h) Communications - See 011/21 above.

016/21 Date of Next Meeting

The next meeting of the Parish Council will take place on Thursday 8th July 2021 at 7.30pm in the Community Centre.

The meeting closed at 8.50pm

TYDD ST GILES PARISH COUNCIL

Minutes of a meeting of the Planning Committee of Tydd St Giles Parish Council held in the Community Centre on Thursday 3rd June 2021

Present - Cllr G Mathias (Chairman), Cllr C Brooks, Cllr M Carter, Cllr B Luck, Cllr A Renshaw, D Gibbs (Clerk)

001/21 Apologies for Absence

Apologies from Cllr T Doyle were received and approved.

002/21 Planning Applications

- a) F/YR21/0333/F - Erect a 2-storey side extension to existing dwelling including 3.4 metre high (approx) gates/brick wall to entrance and alterations to entrance driveway at West Barn, Broad Drove West, Tydd St Giles. (Re-consultation - Amended site plan, floor plans and elevations)

Members noted the improvement in design as a single-storey extension, but expressed concern about the enlargement of the existing windows on the east side of the building and the inclusion of an additional full-height window and a second door. For this reason, they resolved not to support the revised application.

- b) F/YR21/0519/F - Erect 1 x dwelling (2-storey 3-bed) with garage - Plot 4 Land West of Magnolia Cottage, Kirkgate, Tydd St Giles

Members considered this application and resolved to offer no objection but noted that the creation of an access at this point will result in the removal of a section of the roadside hedgerow in contravention of condition 7 of Appeal Ref: APP/D0515/W/19/3227741. Part of this hedgerow has been removed prior to the submission of this application and members wish to preserve the traditional character of Kirkgate.

- c) F/YR21/0526/F - Erect 1 x dwelling (3-storey 6-bed) - Land East of Magnolia Cottage, Kirkgate, Tydd St Giles

Members considered this application and resolved to offer no objection.

- d) F/YR21/0579/F - Formation of an access - East View, 63 High Broadgate, Tydd St Giles

Members considered this application and resolved to support it on condition that the piping of the watercourse is carried out in a manner approved by the North Level District Internal Drainage Board.

003/21 Update on Recent Planning Applications

The Clerk advised members that building work has commenced on Land North of Coach Works, Hockland Road (F/YR07/0916/F and F/YR11/0832/EXTIME).

F/YR21/0307/CERTLU at Willow Tree Farm, Grangehill Road is pending, awaiting further clarification.

F/YR21/0329/F at Tithe Barn, Middle Broad Drove is unlikely to be granted in its current form.

F/YR21/0376/F at Ash Tree Barn, Broad Drove West has been granted.

F/YR21/0409/F (outline) at Land West of The Cottage, Sees Lane is pending, awaiting clarification of highway issues.

004/21 Other Planning Matters

Members of the public have raised concerns regarding aspects of current and future development at the Tydd Golf and Leisure complex. Members asked the Clerk to contact the Chief Planning Officer to clarify the planning framework for the site and to report to the next meeting of the Planning Committee.

The meeting closed at 8.30pm

DRAFT

TYDD ST GILES PARISH COUNCIL

Minutes of a meeting of the Planning Committee of Tydd St Giles Parish Council held in the Community Centre on Monday 28th June 2021

Present - Cllr T Doyle (Chairman), Cllr C Brooks, Cllr M Carter, Cllr B Luck, Cllr, D Gibbs (Clerk)

005/21 Apologies for Absence

Apologies from Cllr A Renshaw were received and approved.

006/21 Planning Application

F/YR21/0591/F - Erect a single-storey garage (retrospective) - Fruit Lodge, Hannath Road, Tydd Gote

Members considered this application and resolved not to support it. The position of the new building fronting onto the road obscures the view of and from the residential properties and is detrimental to both the character of Hannath Road and the enjoyment of the occupants of both properties. The size of the building is considerably larger than the domestic garage described by the applicant, suggesting that its intended use is commercial, rather than domestic, which would be inappropriate at this location.

The applicant is familiar with the requirements of the planning process and should have been aware that this building required planning permission, by virtue of both its size and location. The site is sufficiently large to accommodate a domestic garage within the curtilage of the existing buildings, causing minimal visual harm to the location.

007/21 Update on Recent Planning Applications

F/YR21/0307/CERTLU at Willow Tree Farm, Grangehill Road is pending, awaiting further clarification.

F/YR21/0329/F at Tithe Barn, Middle Broad Drove has been refused.

F/YR21/0333/F at West Barn, Broad Drove West has been granted.

F/YR21/0409/F (outline) at Land West of The Cottage, Sees Lane is pending, awaiting clarification of highway issues.

F/YR21/0519/F at Plot 4, Land West of Magnolia Cottage, Kirkgate is pending.

F/YR21/0526/F at Land East of Magnolia Cottage, Kirkgate is pending.

F/YR21/0579/F at East View, 63 High Broadgate is pending.

008/21 Other Planning Matters

The Clerk reported that he had spoken to a senior planner regarding the Tydd Golf & Leisure complex. The planning consent for all of the properties is for non-residential use. The Planning Enforcement team will investigate any specific allegations of full-time residency.

The meeting closed at 8.05pm



20's Plenty for Us

...making Cambridgeshire a better place to be

May 2021 - Briefing Note for Parish Councillors

1. Introduction

This briefing is for Cambridgeshire County, Town and Parish Councillors and Cambridge City about our call for wide-area signed 20mph limits with engagement for our settlements. It's been prepared by Anna Semlyen, 20's Plenty for Us National Campaign Manager, in consultation with other group members. 20mph is healthier, safer and cleaner than 30mph and has already been adopted as normal by 21M people's UK authorities (see https://www.20splenty.org/20mph_places).

20's Plenty for Cambridgeshire formed in March 2021, one of 500 branches of 20's Plenty for Us, the National Campaign for 20mph limits. We meet on Zoom. All those interested are welcome – email cambridgeshire@20splentyforus.org.uk for the links. Or email anna.s@20splenty.org or call 07572 120439 to start a branch or join our e-lists.

2. Summary

- 20's Plenty for Cambridgeshire offers you a free presentation if you need it. Our aim is to help you to table and vote through a motion of Supporting 20's Plenty for Cambridgeshire – default signed 20mph limits with public engagement where people live, work, shop, play and learn for your residents.
- Please pass a motion
“This Parish supports 20's Plenty for Cambridgeshire's aim for wide area, default signed 20mph limits with public engagement for this Parish and across Cambridgeshire's urban and village settlements.”
- Some roads can be exempted where the needs of vulnerable road users are catered for.
- We are campaigning for County and City policy to be updated and for costs to be met through the Council applying for Government grants or from County or City Level funding.
- At Parish level, once a motion is adopted, we suggest you tell County level councillors (who have powers), to form a working party and work with other elected representatives across Cambridgeshire to call for 20mph limits to bulk buy/reduce costs by sharing the legal traffic regulation orders (£5k).
- We can **send you a slide deck or offer to speak at your meetings** and answer questions. The www.20splenty.org site has many facts and figures to back you up, too.
- 20mph limits have signage, whereas zones are used to describe places with physical calming (humps chicanes, etc). However, the difference between a 20mph zone and limit is almost non-existent now. NB in 20mph *zones*, Department for Transport guidance is that traffic calming features (including repeaters) are at 100m intervals, in a *limit* at 200m intervals. A limit is therefore less expensive – see https://www.20splenty.org/signs_regs_changes for details of signage regulation changes which have decreased signage costs.

- 20 mph limits are **affordable and have significant, proven road safety, societal, environmental, economic and climate benefits**. Benefits do not depend on regular police enforcement – any speed reduction reduces traffic risk particularly to walkers, cyclists and scooter riders. They are accepted as normal by authorities for 21M people in the UK. It is global best practice where people mix with motor traffic and the sole theme of UN Global Road Safety week 2021 this May (www.unroadsafetyweek.org).
- 20mph limits **do not affect journey times significantly** in settlements. Due to stop go traffic in built up areas, it takes about 10 secs longer per mile. In a default 20mph limit, some roads can be exempted to higher 30mph speeds where the needs of vulnerable road users are met. Bus journeys and timetable times are generally unaffected.
- 20 mph limits are **popular** –Government surveys find 71% in favour in residential streets.
- Increased **compliance** with 20 mph limits can be done in ways that do not rely on police enforcement – e.g. education, Speedwatch etc., and all new car models will have in-car speed limiters from April 2022.
- The **cost** of a village-wide 20 mph limit has at least two phases. A design and consultation phase and an implementation of signs phase. Costs depend on detailed factors. Sharing design and legal order costs between settlements will **hugely reduce costs**. Parishes can work together. **Funding sources include** Council-level grants from Govt, Local Transport Plan, Dir of Public Health funds ringfenced for health improvement, parking funds, bridge tolls, house builder developer contributions to parish improvement funds where building is occurring – CIL and section 106, parish precepts etc.
- Scheme design isn't complex - it details how many signs would be placed where, usually on existing lampposts. Painted roundels are also an option. Designing a resident consultation on the proposed scheme and engagement on why 20mph is beneficial with both paper and digital responses (e.g. the common place platform). Costs depend on who carries it out – the local authority or a private transport consultancy.

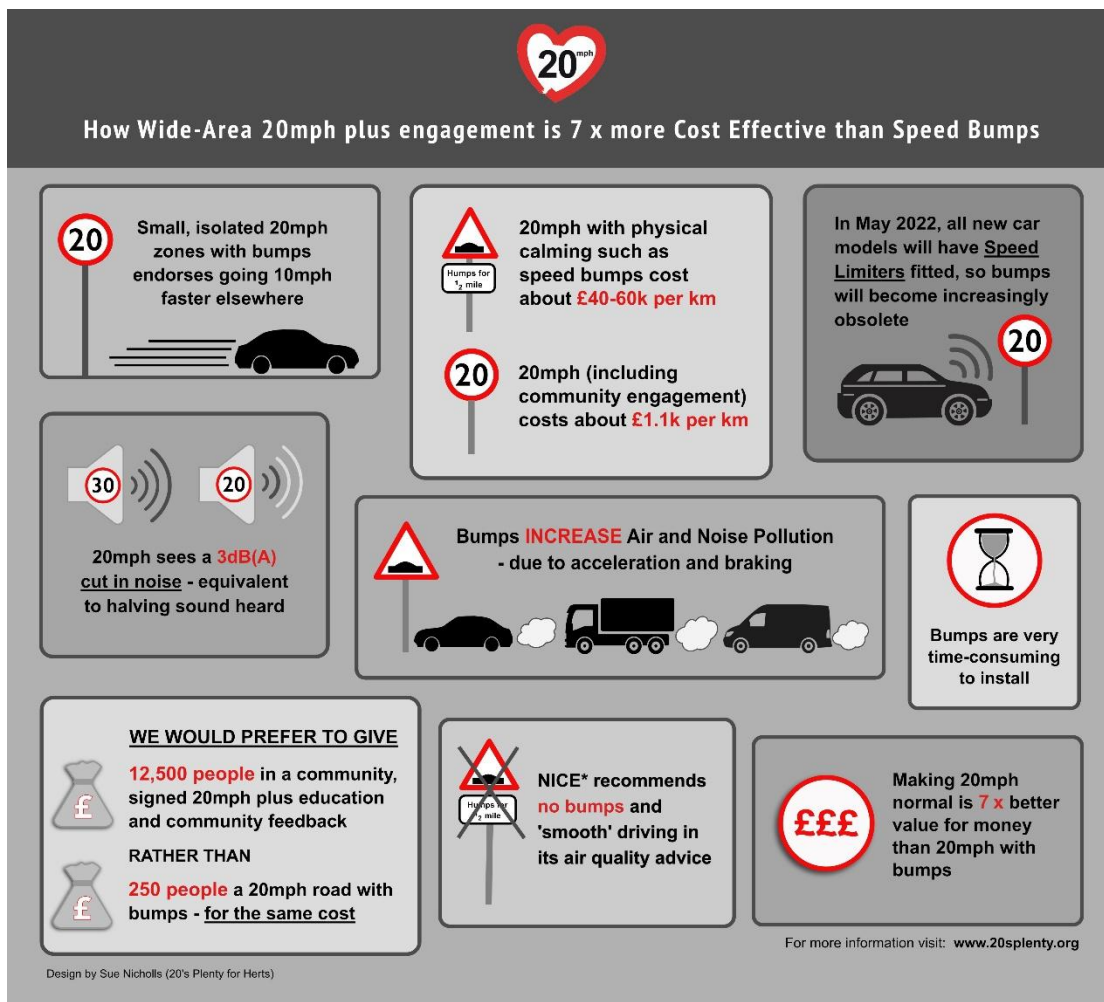
3. Current Cambridgeshire Speed Policy and 'What's the difference between 20 mph zones and 20 limits?

Policy is at page 81 of this document: <https://www.cambridgeshire.gov.uk/asset-library/Highway-Operational-Standards-April-2020-v3.pdf>

It accepts signage • **where the mean speed of traffic is 24mph or lower** • in combination with self-enforcing speed reduction features necessary to achieve a mean speed no greater than 24mph.

Note that in the opinion of Rod King MBE, the founder of 20's Plenty for Us, "It doesn't follow DfT guidelines as per 01/2013. It seems to be invented. I also suspect many 20mph limits in city of Cambridge wouldn't meet this Cambridge county policy. Note that the Highway Authority for Cambridge City is Cambridge County Council."

We recommend signage schemes as they are much more cost effective per mile per hour reduced. Humps are not required for 20mph limits to be effective. Signs and public engagement are seven times better value for money than humps.



20 mph limits are now being introduced in villages, towns and cities throughout the UK - more than half of the 40 largest local authorities have them. Limits involve installing road signs and markings to inform road users of the change in the maximum legal driving speed. They can be enforced by the police, like any other speed limit. Whilst enforcement increases their effectiveness, it is not essential for worthwhile benefits.

20 mph limits prioritise quality of life, helping to create places where human activity – including walking, cycling and talking - takes precedence over traffic movement.

20 mph limits are supported by Government. Department for Transport (DfT) Circular 1/13¹ 'Setting Local Speed Limits' states that '*Traffic authorities are asked to...consider the introduction of more 20 mph limits and zones, over time, in urban areas and built-up village streets that are primarily residential, to ensure greater safety for pedestrians and cyclists...*'

The importance of encouraging more people to make short journeys on foot and cycle has become even more apparent during Covid-19. In November 2020 DfT published new statutory guidance to local authorities on their duties under the Traffic Management Act 2004². This states that local authorities should 'swiftly' take measures to encourage active travel and notes that they include: '*Reducing speed limits: 20mph speed limits are being more widely adopted as an appropriate speed limit for residential roads, and many through streets in built-up areas.*'

¹ <https://www.gov.uk/government/publications/setting-local-speed-limits>

² <https://www.gov.uk/government/publications/reallocating-road-space-in-response-to-covid-19-statutory-guidance-for-local-authorities/traffic-management-act-2004-network-management-in-response-to-covid-19>

20 mph limits are supported by many organisations - the World Health Organisation (WHO), Association of Directors of Public Health, the National Institute for Health and Care Excellence (NICE), the Royal College of Paediatrics & Child Health, Alzheimer's Society, UK Health Forum, and Public Health Wales.

In July 2020 the Welsh Government voted to make 20 mph the default speed limit for all urban areas in Wales, with 30 mph limits becoming the exception, and with a target date of April 2023 for the law change³. They are signing the remaining 30mph roads, which is a cost effective method.

The UN Global push for road danger reduction in 2021 for the Global road safety week in May 17-23rd 2021 and second decade of action focuses on 20mph/30kmh. Wales and Spain have agreed it.

4. Benefits

Evidence on the benefits of introducing a 20mph limit in residential areas of the County would include:

- **POPULAR WITH VOTERS**

Most people 71% want 20mph limits. This rises after implementation. Wide area 20mph limits have never been removed anywhere in the UK. **Property prices rise as the area improves.**

- **SAFER STREETS FOR ALL, PARTICULARLY CHILDREN AND THE ELDERLY**

Significantly less risk of serious injury especially for vulnerable road users; less fear and intimidation from motor vehicles for all road users and especially those walking and cycling. Increasing use of silent electric vehicles – cars, e-bikes, e-scooters means more stealth danger in the road. 20mph means that unheard vehicles are less likely to injure people badly.

- **PROMOTING ACTIVE HEALTH FOR RESIDENTS**

Reinforcing healthy lifestyles by encouraging walking and cycling. Less obesity, heart disease, loneliness. The elderly and vulnerable retain independent mobility longer, preventing falls, keeping them self sustaining in daily life which reduces social care costs. Children get to play out and learn independent mobility, less escort and taxi duty for parents and carers.

- **BETTER PUBLIC HEALTH**

Less pollution reduces respiratory disease and deaths (these are 20 – 25 times more prevalent than road deaths), more active travel (inactivity is killing British people early), traffic reduction, people sleep better, less anxiety, more sociability, less loneliness. Better all round physical, mental and emotional health.

- **ENVIRONMENTAL IMPROVEMENTS**

Reduced vehicle emissions and noise due to lower speeds and traffic volumes. 20mph is half as noisy as 30mph. It's good for sustainability and is climate friendly due to less acceleration and braking. Less fumes, especially less diesel which is the most toxic. Tourism improves as it's a nicer place to be.



- **BETTER COMMUNITY LIFE**

20mph enables lifestyle changes, renewed community life, sociability and the positive atmosphere we all want where we live. Our towns and villages will be more attractive, liveable and sustainable places, in keeping with Staffordshire's growing eco-friendly ethos. Covid recovery too.

- **STRENGTHENING THE LOCAL ECONOMY**

20mph aids local business as people want to shop and live in 20mph places. Helps fight the trend to online buying only towards local economy.

- **LOWERS THE COST OF TRAFFIC DANGER**

Road casualties waste over 2% of GDP. Collisions are predictable and preventable. Introducing a safer system by reducing speed will reducing casualties saves everyone money (less time off work for instance, social care costs) as well as pain and suffering.

The trend towards 20mph is well-established in the UK and other countries.

20mph is coming and we don't want Cambridgeshire left behind.

5. Road Safety



People struck by a motor vehicle are at least 5 times less likely to die if hit at 20mph than 30mph. This increases to 10 times if the pedestrian is over 60 years old. 30mph is like a 3rd floor building fall, 20mph a first floor.

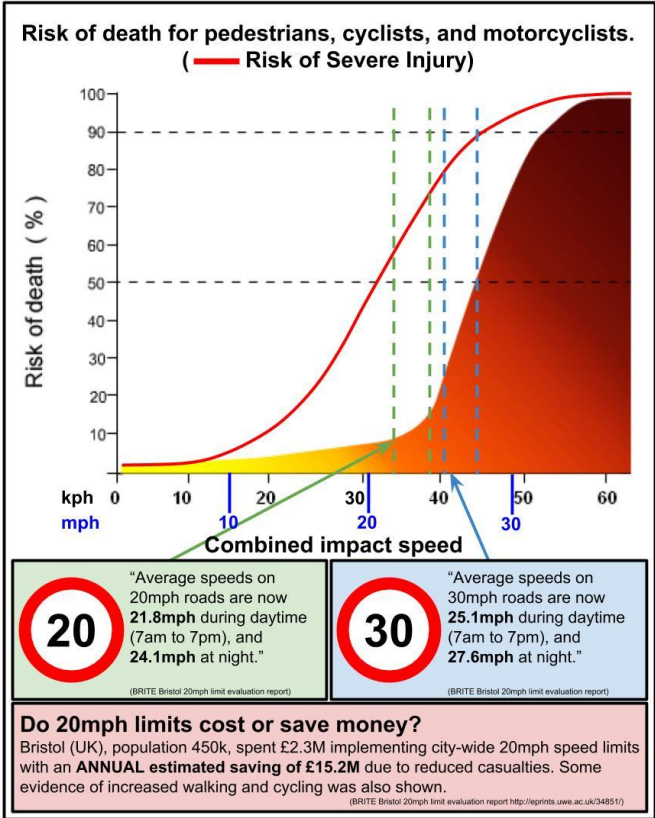
The effect of speed

	Average for all ages	Over 60 year olds
At 40 mph	• 31% are killed	• 98% are killed
At 30 mph	• 7% are killed	• 50% are killed
At 20 mph	• 1% are killed	• 5% are killed

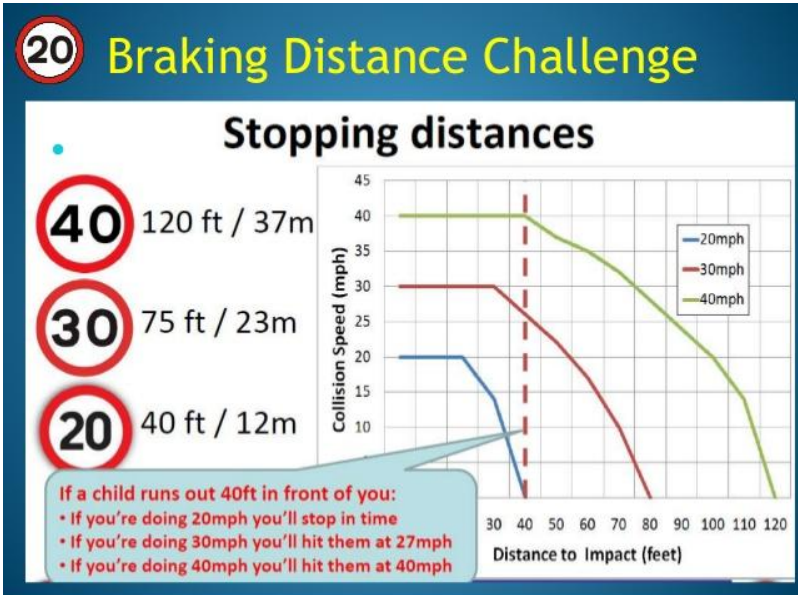
Data from Road Safety Web Publication No. 16 *Relationship between Speed and Risk of Fatal Injury: Pedestrians and Car Occupants* - Department for Transport (September 2010)

A child is **3 times** more likely to die if hit by a car on a 30mph road than on a 20mph road.

We need a 20mph national speed limit in urban areas, with 30mph being the exception.



In the distance a 20mph car can stop, a 30mph car will still be moving at 24mph.



Stopping Distances in Normal Conditions for the Average Car

20mph 6m 6m 12m (40ft) 3 cars

Thinking Distance

30mph 9m 14m 23m (75ft) 6 cars

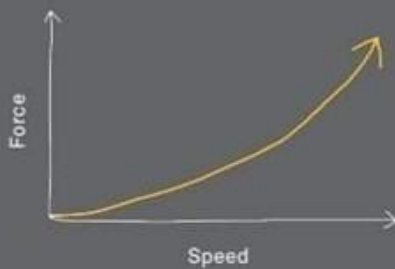
Braking Distance

40mph 12m 24m 36m (118ft) 9 cars

How Speed Kills

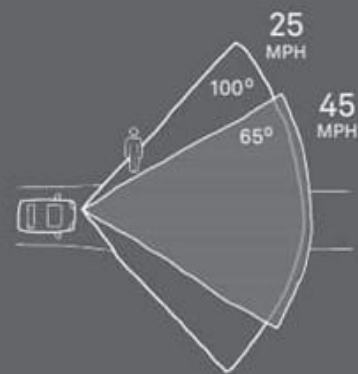
1

Crashes at higher speeds are more **forceful** and thus more likely to be fatal



2

Drivers traveling at higher speeds have a **narrower field of vision**



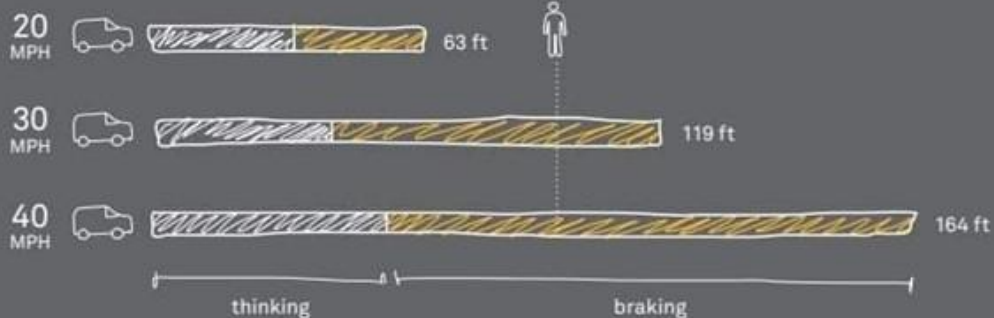
3

Drivers traveling at higher speeds **travel further** before they can react



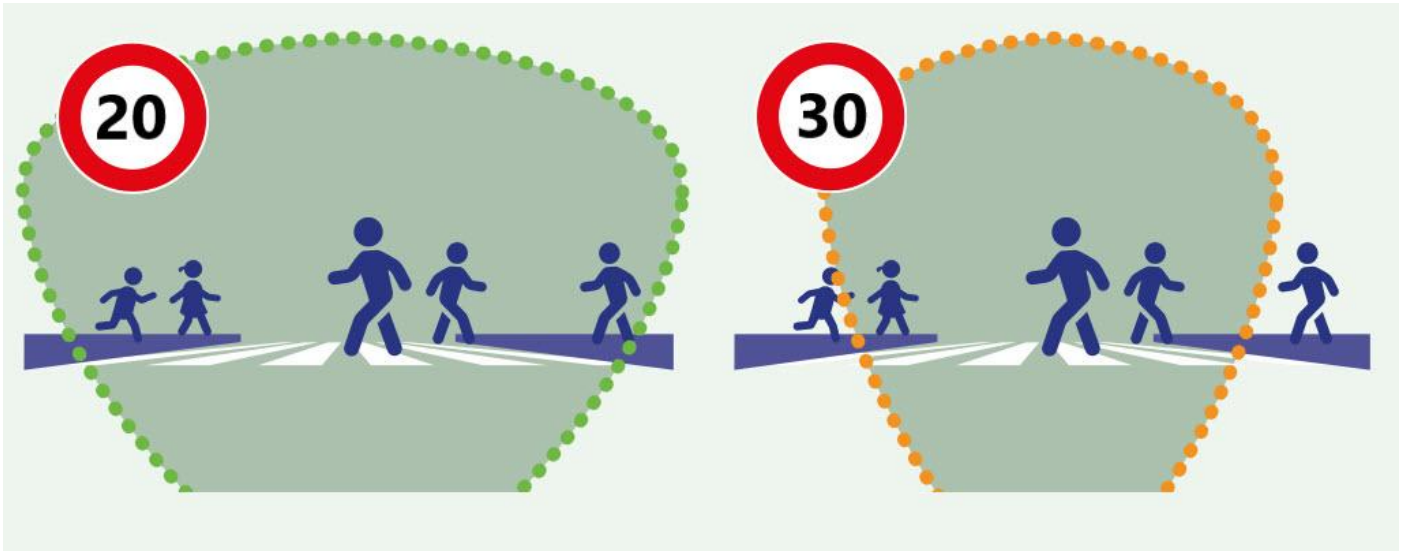
4

Vehicles traveling at higher speeds have **longer braking distances**



It is important to recognise that any reduction in vehicle speed reduces risks of injury and death. Research quoted by DfT in Circular 1/13 found that on urban roads with low average traffic speeds any 1 mph reduction in average speed can reduce the collision frequency by 6%.³

Road safety is therefore improved even when full compliance with the 20 mph limit, whether through traffic calming or enforcement, is not achieved. Studies (see Bristol case study. below) have confirmed that relatively small changes in average speed result in significant casualty savings; and that speed reductions are greatest on the fastest roads where the risk of casualties is the highest.



Visually, the driver sees more peripherally at 20mph than 30mph.

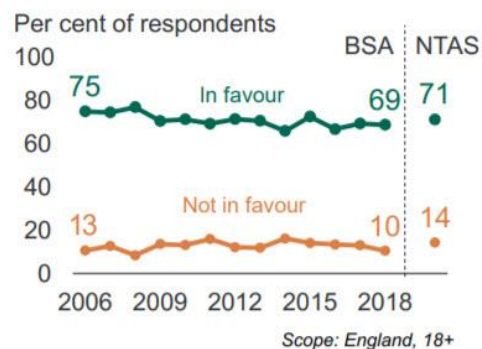
Vision scientists have proven that children can't handle looming until their teens. They make mistakes and step into fast traffic (Dr John Wann and Prof Jodie Plumert). 10 year olds will make mistakes in crossing simulations at 25mph one in 20 times. It's not till 14 that their eyes can cope with traffic over 20mph.

Over time, as 20 mph limits become more established, it is expected that average speeds will reduce further, aided by changing attitudes and technologies such as in car speed limiters.

6. Public Opinion

Repeated surveys show that 20 mph limits are popular. The most recent National Travel Attitudes Study carried out by DfT⁴ found that 71% of people are in favour of 20 mph speed limits in residential streets. Once schemes are installed support for the 20 mph limit typically increases.

Speed limits of 20mph in residential streets



³ Taylor, M. C., Lynam, D. A. and Baruya, A. (2000), TRL Report 421 – The Effects of Drivers' Speed on the Frequency of Road Accidents. Crowthorne: TRL

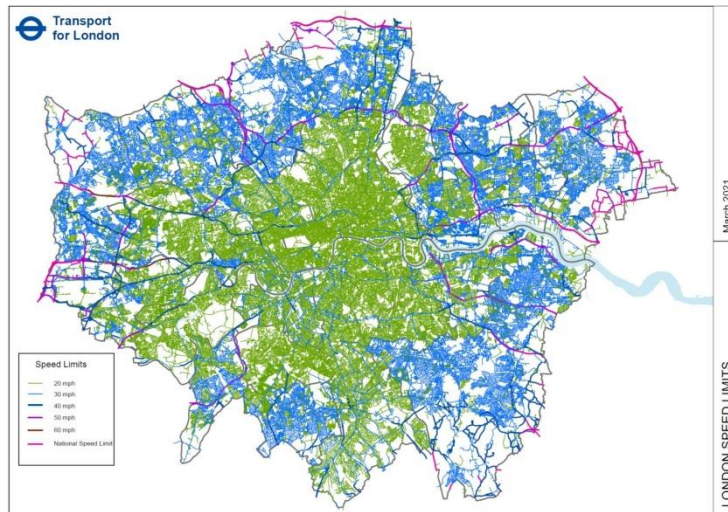
⁴ https://assets.publishing.service.gov.uk/government/uploads/system/uploads/attachment_data/file/810908/national-travel-attitudes-study-2019-wave-1.pdf

7. Case Studies

20 mph limits have been introduced to large parts of cities, to towns and to villages. Some examples:

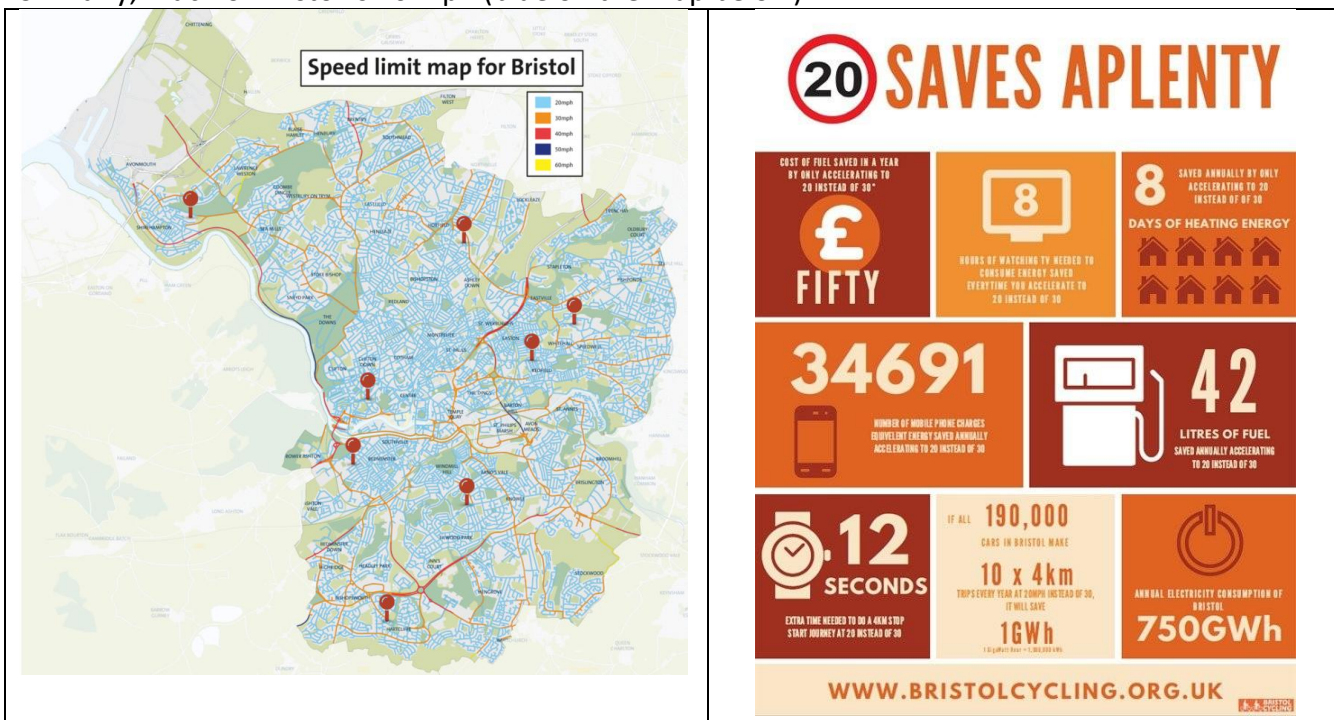
London

Most parts of London now have a 20 mph limit (green on the map below) including all of the congestion charging zone



Bristol

Similarly, much of Bristol is 20 mph (blue on the map below)



The Bristol 20 mph project has been extensively studied.⁵ The BRITE study⁶ found 94% of surveyed roads had slowed, 2.7mph reductions in average speed and estimated casualties avoided per year of 4.53 fatalities, 11.3 serious injuries and 159.3 slight injuries.

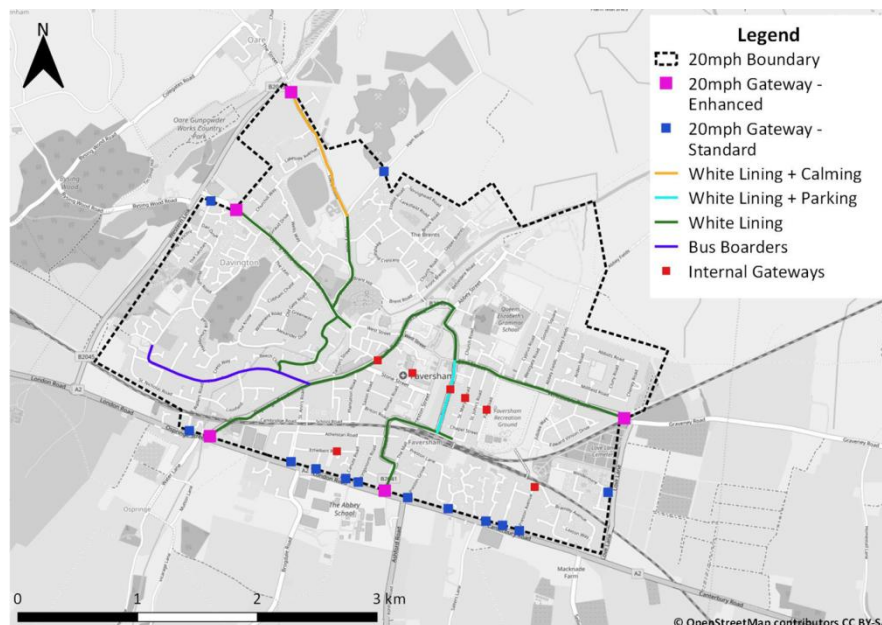
These sum to estimated cost savings of over £15 million per year - annual savings over 5 times greater than the one-off roll out cost of £2.77m mostly funded by Government. Over a ten year period 20mph in Bristol will have saved 45 lives, 113 serious injuries, 1,593 minor injuries, and save over £147m net - a fantastic return on a public health investment! It also saves drivers on average £50 per vehicle per year on fuel.

⁵ <https://www.bristol20mph.co.uk/find-out-more/research-and-monitoring/>

⁶ http://eprints.uwe.ac.uk/34851/7/BRITE%20Bristol%2020mph%20limit%20evaluation%20report_20July18update.pdf

Faversham

Faversham is an historic market town of 20,000 people in Kent. 20's Plenty for Faversham instigated the introduction of a town-wide 20 mph limit, which went live in June 2020.



Faversham 20 mph limit area

Kent County Council was initially opposed to a town-wide limit but was persuaded by the strength of local support and the technical case made.⁷ It was successfully demonstrated that a 20 mph limit covering the whole town would be cheaper (because no changes in speed limit would need to be signed) and more effective, since drivers would find it easier to comprehend.

Low-cost techniques to reduce traffic speeds have been accepted by the highway authority, such as attractive gateways to the settlement announcing the change in speed limit, the removal of road centrelines (which has been shown to lower average speeds by up to 4 mph) and 'Community Corners', resident-led measures such as planters at key locations⁸.

There is no reason such techniques could not be used in Cambridgeshire's settlements.

8. Enforcement

20 mph limits are like any other speed limit and are enforceable by the police. Policies for speed limit enforcement vary between police authorities – some, such as the Metropolitan Police in London, actively enforce all 20 mph limits. The policies of Cambridgeshire Police towards enforcement will need to be reconfirmed after the Police and Crime Commissioner elections in May 2021.

However, even in the absence of regular enforcement, research shows that 20 mph limits reduce speeds, collisions and casualties. Furthermore, driver education through community engagement can help drivers voluntarily comply with 20mph (the enforcement threshold is 24mph. Atkins' research for the Department of Transport found 80% of drivers comply with 20mph in urban areas and 74% on residential streets.

⁷ <https://www.favershamtowncouncil.gov.uk/wp-content/uploads/2020/10/Technical-Note-19-03-19.pdf>

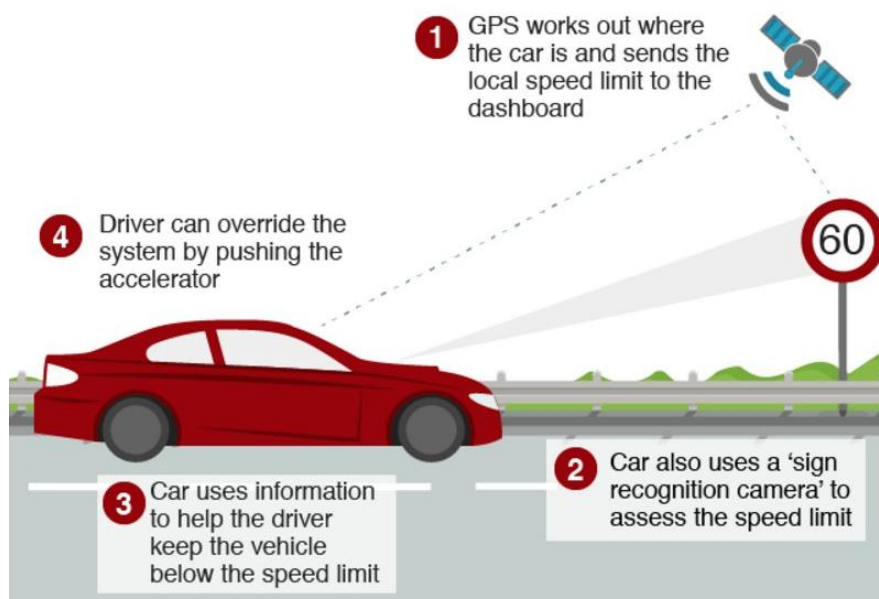
⁸ <https://static1.squarespace.com/static/5d0a03b295f37b00018da721/t/5d2342e8eb83b800013132f8/1562591982860/Community-Corners-TRL.pdf>

Compliant drivers become pacer vehicles which enforce 20mph on the traffic behind them. Community Speedwatch can help– whereby drivers exceeding the speed limit are sent warning letters.

In the near future in-car speed limiters will progressively reduce the need for active enforcement. From May 2022 all new model cars sold in the EU and the UK will have them. This will prevent the car exceeding the limit unless the driver consciously pushes past a point of resistance on the accelerator. From May 2023 the requirement for ISA will apply to all new cars sold.

Whilst drivers can override the limiter, research shows that most won't, and in fact welcome the reassurance that they are not breaking a law inadvertently. The car will also black box record if the speed limit has been exceeded in the event of a collision, which would affect the driver's liability.

How does speed limiting work?



Intelligent Speed Assistance

9. Costs

Wide area 20mph limit schemes have typically cost about £3 per head for urban settlements and £5 per head for villages. The cost components are the scheme design, consultation on it, the legal traffic regulation order (£4-5k), signage and a marketing campaign of the benefits to drivers. When several villages are done together the costs reduce from needing only a single traffic regulation order. Costs reduce when more roads are in the scheme at 20mph rather than exempting main roads due to not requiring as many terminal signs (60cm round signs). Repeater signs are 30cms wide.

Other Counties e.g. Lancashire, Bath and North East Somerset, Calderdale have agreed 20mph for every settlement. Wales too. We call on Cambridgeshire for this policy.

Funding for 20mph in other places has come from various sources – the County Highways budget, parish funds, developer funds, public health, government grants, councillor's locality budgets, fines, tolls and charities. It is not an expensive intervention in transport terms. A once off cost gives benefits for years and it typically pays back within a few months in casualty reductions alone, though there are other benefits.

10. Next Steps

This briefing note has described a proposed 20 mph limit for areas in Cambridgeshire in general terms, together with its benefits and costs. 20's Plenty for Cambridgeshire have begun asking Parish Councils to support the campaign. We are happy to present to any elected representatives.

Speed limits are set by Cambridgeshire County Council as Highway Authority, who would be responsible for making the necessary Traffic Regulation Orders and overseeing erecting signs, usually by employing private contractors.

Being able to demonstrate local support will be critical to securing County Councillor and the County's agreement to #ActOn20mph. To that end it is hoped that Parish and Town Councils would be willing to work with 20's Plenty for Cambridgeshire to assess the potential benefits and feasibility of a 20 mph limit. Each local parish council vote for 20mph limits will help progress our call for wide area 20mph.

Please pass a motion

"This Parish supports 20's Plenty for Cambridgeshire's aim for wide area, default signed 20mph limits with public engagement for this Parish and across Cambridgeshire's urban and village settlements."

If each Parish gave a modest £100-£200 contribution to buy 20mph posters for gardens, bins and car window and bumper stickers, it would be most helpful to local groups of 20's Plenty in Cambridgeshire. 150 car stickers are £61.50 for instance.

https://www.20splenty.org/stickers_and_campaign_materials has the details of how to purchase them. Large sticker posters, for instance are £1.



It would pay back within 5 months - see the table on the next page.

More enforcement is promised too - Email from February 2021:

The South Cambridgeshire Area Commander - Superintendent James Sutherland - admitted more needs to be done in Cambridge city on enforcing speed limits. He's committed to rolling out training in the Ultralite handheld speed gun for all uniformed officers in 2021.

Local Authority: Cambridgeshire excl Peterborough		
	All roads	30mph roads
Total number of police reported road casualties in Cambridgeshire in 2019	1,646	648
Of which: Killed	25	1
Seriously injured	329	125
Slightly injured	1,292	522
Cost of police reported casualties (DfT casualty cost estimates)	£148.5m	£39.7m
Including medical and ambulance	£7.1m	£2.7m
Total number of police reported collisions in Cambridgeshire in 2019	1,258	559
Additional collision costs (extrapolated from DfT estimates for GB)		
Other collision costs (police time, damage to property etc)	£8.6m	£2.3m
Collisions resulting in damage only (no casualties)	£56.0m	£15.0m
Casualties not reported by police	£185.4m	£49.6m
Total estimated collision / casualty costs in Cambridgeshire in 2019	£398.5m	£106.6m
Cost per person in Cambridgeshire	£611	£164
Cost:benefit of implementing 20mph on 80% of roads in Cambridgeshire		
One-off implementation cost (capital)		£2.6m Covers 80% of the population
Casualty reduction		104 (all severities)
Annual revenue benefits (costs for police reported casualties <u>only</u>)		£6.4m Assumes 20% reduction in casualties
Payback (months)		4.9
According to police records (note 1), Cambridgeshire had 1258 collisions and 1646 casualties in 2019. 648 of these casualties were on 30mph roads, at a total cost (note 2) of £148.5m including £39.7m for 30mph roads.		

20's Plenty for Cambridgeshire

Email: cambridgeshire@20splentyforus.org.uk

Twitter: @20Cambs

Facebook: facebook.com/20Cambs

Anna Semlyen, 20's Plenty for Us Campaign Manager

T: 07572 120439

Email: Anna.s@20splenty.org

Web: www.20splenty.org

Follow us on Twitter @20splentyforus; @AnnaSemlyen1

**20's Plenty where people are
...making Cambridgeshire a better place to be**



Draft Protocol between Tydd St Giles Parish Council (“the Parish Council”) and the Trustees of the Tydd St Giles Community Centre and Recreation Ground Charity (“the Charity”)

Introduction

The Parish Council awarded a contract for the construction of the Community Centre, which was completed in December 1993. On 11 December 1993, the Parish Council granted a lease of 125 years to the Charity for them to operate the building as a community centre for the benefit of the local community. This document seeks to clarify the roles and responsibilities of the two parties in relation to maintenance and improvement of the facility.

Tenant Obligations

The lease places the following obligations on the Charity in respect of the maintenance of the building:

3.2 To keep the property in the state of fair wear and tear only excepted

3.5 To keep the inside of the property well and attractively decorated

3.6 To decorate the outside of the building whenever it is reasonably required, on each occasion using the type of finish used previously

Landlord Obligations

The lease places no specific obligations on the Parish Council in respect of the maintenance of the building.

Value Added Tax

As a local council, the Parish Council can reclaim VAT on its expenditure. This privilege does not extend to expenditure on behalf of third parties such as the Charity. The Charity is not registered for VAT and must therefore pay VAT on all purchases.

Shared Principles

It is in the interest of both parties to ensure that the Community Centre remains an attractive and well-equipped facility to maximise both its use by the local community and its financial viability. In order to achieve this, all works, apart from the tenant obligations listed above, require careful coordination and planning.

The Protocol

All major repairs and improvements will be discussed and agreed in writing between the two parties before the submission of funding applications or tendering to contractors. A lead body will be chosen for each project. When the Charity assumes this role, it will apply for funding for the cost of the works, inclusive of VAT and tender the works in accordance with its policies and procedures. When the Parish Council takes the lead, it will apply for funding and tender for works in accordance with its standing orders and financial regulations and reclaim the VAT on the expenditure. The two parties will work together to agree a rolling three-year plan for outstanding and future works to enable appropriate budgetary provision to be identified.

Mr D Gibbs (Clerk To Tydd St Giles Parish
Council)
Parrock View
358 High Road
Newton-In-The-Isle
Wisbech
PE13 5HS

Contact: Alison Hoffman
Development Services
Direct Dial Tel: 01354 622309
E-mail: planning@fenland.gov.uk

Our ref: F/YR21/0519/F

30 June 2021

Dear Sir/Madam

**Erect 1 x dwelling (2-storey 3-bed) with garage at Plot 4 Land West Of Magnolia
Cottage Kirkgate Tydd St Giles Cambridgeshire**

Revised proposals have been received in respect of the above.

The revision is: *Revisions to scheme to respond to matters raised during consultation to include repositioning of access, minor amendments to dwelling design and clarification regarding boundary treatment; agents email dated 29.06.2021 outlines amendments and rationale*

Any additional comments you may wish to make in respect of this revision must be received on or before **14 July 2021**. You will not be notified of the outcome of this application unless you specifically request to do so, all details will however be published on our website.

All plans and documents relating to this application can be viewed at
www.publicaccess.fenland.gov.uk/publicaccess.

To access these documents as well as other relevant details please follow the instructions below:

- 1 Enter the full application number 'F/YR21/0519/F' on the simple search form and click Search
- 2 Click on the 'Documents' tab

Documents are published in Adobe PDF format. Please also bear in mind that some of the larger documents may take some time to download.

Continued/...

2

30 June 2021

Our ref: F/YR21/0519/F

Should you have any questions or wish to discuss this matter further please do not hesitate to contact the above named officer.

Yours faithfully

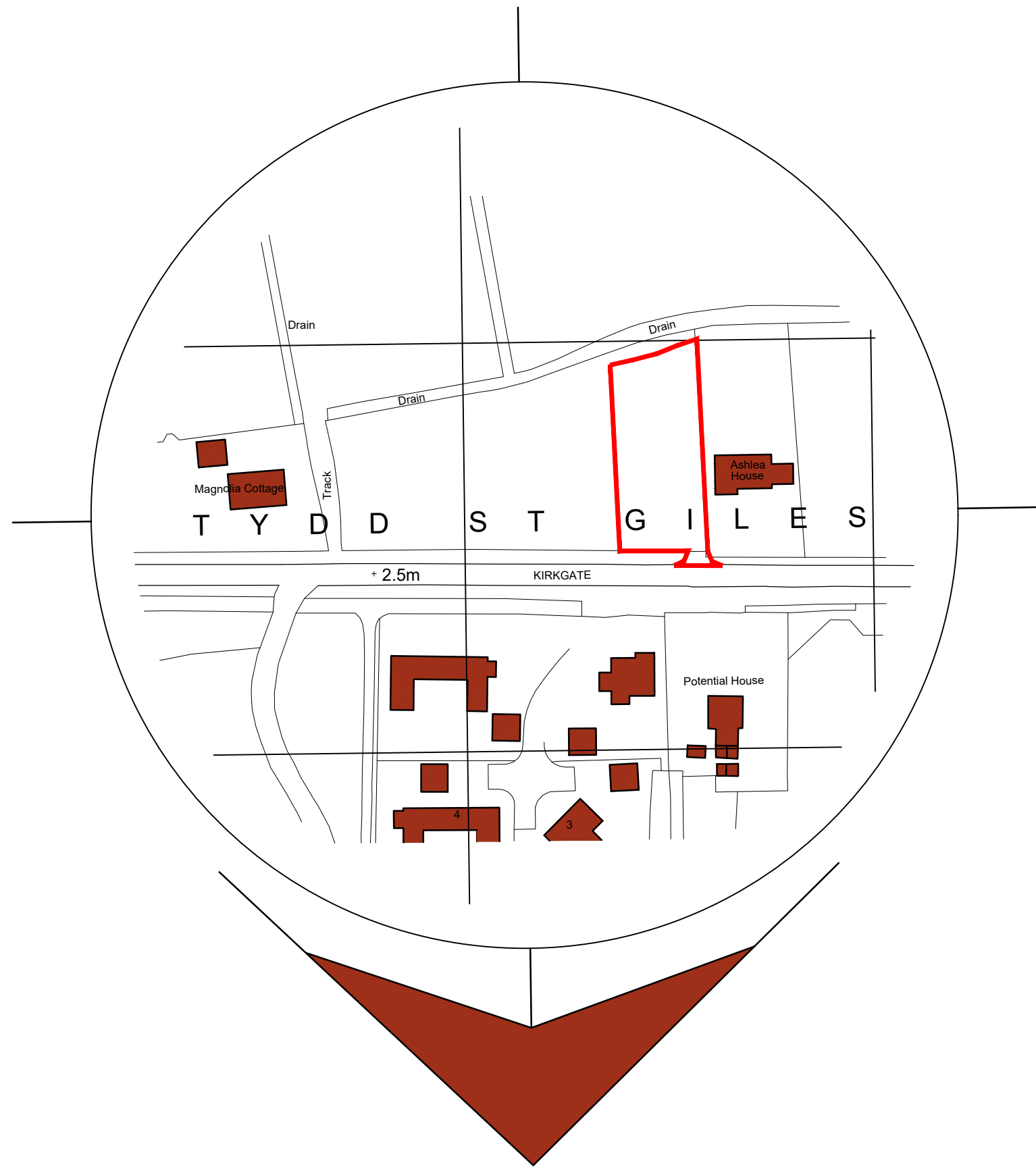
Development Services

Alison Hoffman

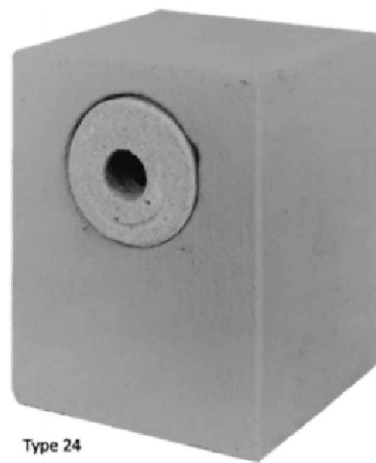
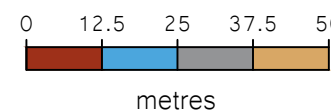
Development Officer

Data Protection Act 1998

To provide you with our services we will need to record personal information, such as your name and address. This information will be kept securely and only accessed by approved staff. We will not share your information with anyone else without telling you first. Please note however that all planning files are public documents and are open for inspection. Applications are also displayed on the Fenland District Council website. If you would like more details about how we protect personal information then please contact our Data Protection Officer



Location Plan
Scale: 1:1250



Bird Box
Schwegler Integrated Brick Box

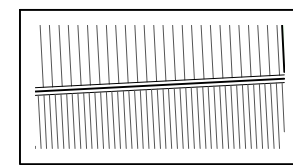


Bat Box
Ibstock Enclosed Bat Box 'C'

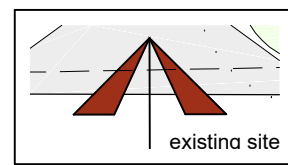


Access for Hedgehogs
Example of access provision to hedgehogs into site (130 x 130mm)

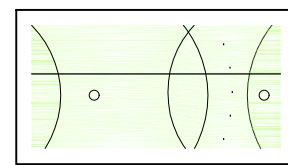
SITE PLAN KEY



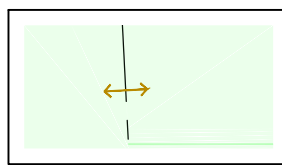
Indicates proposed buildings



Indicates existing site access



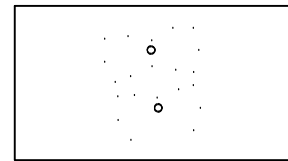
Indicates position of existing un-surveyed trees and hedges to be retained where applicable



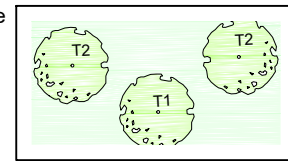
Indicates placement of hedgehog gap in fence



Indicates un-surveyed buildings taken from OS map



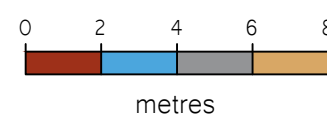
Indicates features to be demolished



Indicates proposed trees and hedges



Site Plan
Scale: 1:200



Landscaping Description	
Trees to include: T1 - Silver Birch ' <i>Betula Pendula</i> ' T2 - Field Maple ' <i>Acer Campestre</i> ' Size - 10 - 12cm Planted	All supporting stakes to new trees to penetrate min 600mm into soil to ensure stability. Proprietary adjustable tree ties to be used to accommodate tree growth. stakes to be installed and maintained for 18 - 36 month depending on condition of tree.
SP - Shrub Planting to include: Lonicera Pileatea, Spiraea Godi Flame, Scenecio Greyii, Buddleja davidii C3 pot size, planting size 40-60cm, planted at 750mm ctrs	
Landscaping Notes - All planting, seeding or turfing as shown on the above landscaping plan are to be carried out in the first planting and seeding seasons following the occupation of the dwelling of the completion of the development, whichever is sooner, and any trees or plants which within a period of 5 years from the completion date, are to be removed and replaced with others of a similar size and species, unless the Local Planning Authority gives written consent to any variation.	
<ul style="list-style-type: none">Any works close to trees and/or hedgerows should be undertaken in accordance with the British Standard BS 5837: 2012 and National Joint Utilities Group Guidelines (NJUG4).Any works involving vegetation clearance including the removal of the brush pile and small section of hedgerow should avoid the bird breeding season (late February to August inclusive) to avoid damage to nesting species. If this is not acceptable, then a nesting bird survey should be undertaken by an experienced ecologist immediately prior to the start of site clearance commencement.It is recommended that guidelines from the Bat Conservation Trust and ILP (Institute of Lighting Professionals) on bats and artificial lighting are followed.It is recommended that the new sites include provision of nesting habitats in the form of nest boxes (see site plan).Clearance of onsite vegetation considered suitable to support hedgehogs will be avoided. If this is not practicable then clearance will be carried out by hand or under supervision, avoiding frosty days when hedgehogs may be hibernating.	

- General Notes
- All dimensions are shown in 'mm' unless otherwise stated.
 - The contractor, sub-contractors and suppliers must verify all dimensions on site prior to the commencement of any work.
 - This drawing is to be read in conjunction with all relevant engineers and specialist sub-contractors drawings and specifications.
 - Any discrepancies are to be brought to the designers attention.

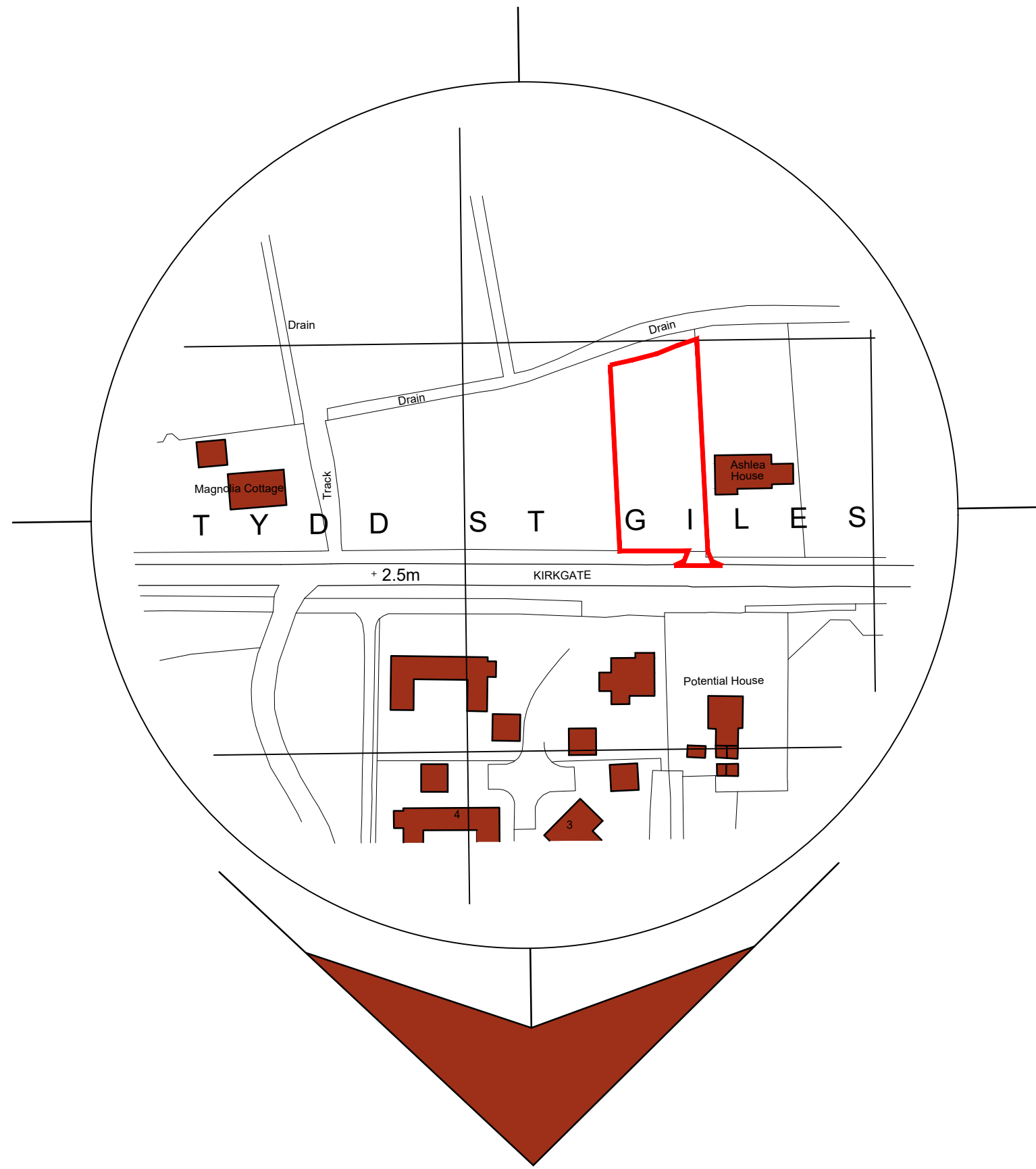
Revisions		
A	Feb 2021	Changes Following Planners Comments
B	April 2021	Changes Following Ecology Report
C	June 2021	Changes Following Planning Feedback

Drawings to be read in conjunction with
Greenwillows Associates Ltd Ecological Impact
Assessment. (NGR: TF 43255 16528)

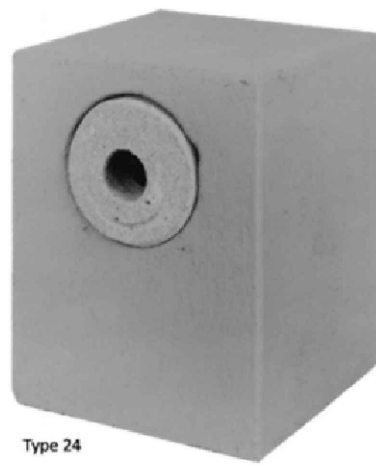
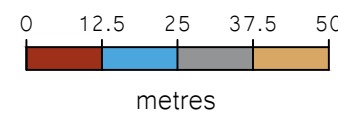
Status
FOR APPROVAL

SWANN EDWARDS
ARCHITECTURE
Swann Edwards Architecture Limited, Swann Edwards Architecture,
Black Barn, Fen Road, Guyhirn, Wisbech, Cambs. PE13 4AA
t 01945 450694 e info@swannedwards.co.uk w www.swannedwards.co.uk

Job Title Proposed Dwelling Land West of Magnolia Cottage Plot 4, Kirkgate, Tydd St Giles For: Mr Sinnott	Date December 2020	Drawn by JRB Checked by GE
Drawing Title Planning Drawing Site & Location Plan	Job No. SE-1509 Dwg No. PP1000	Sheet Size A1 Revision B



Location Plan
Scale: 1:1250



Bird Box
Schwegler Integrated Brick Box

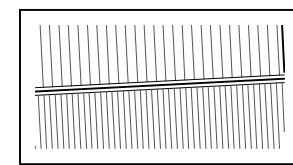


Bat Box
Ibstock Enclosed Bat Box 'C'

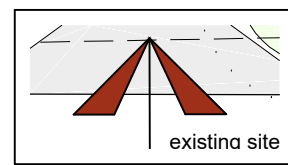


Access for Hedgehogs
Example of access provision to hedgehogs into site (130 x 130mm)

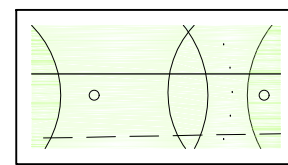
SITE PLAN KEY



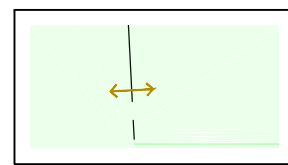
Indicates proposed buildings



Indicates existing site access



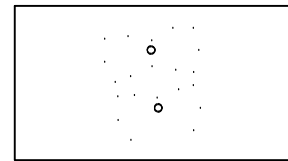
Indicates position of existing un-surveyed trees and hedges to be retained where applicable



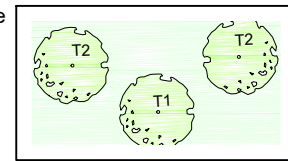
Indicates placement of hedgehog gap in fence



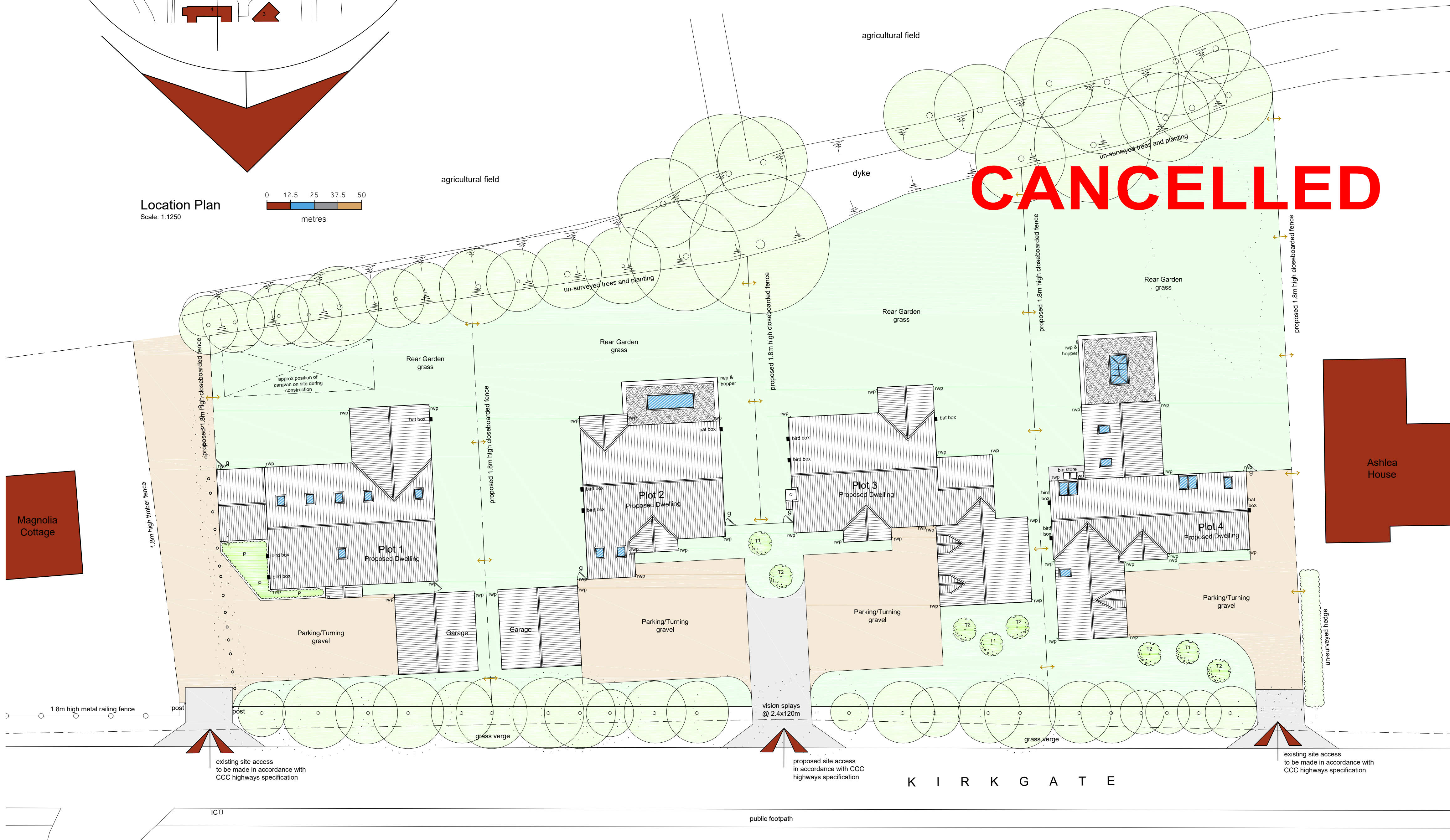
Indicates un-surveyed buildings taken from OS map



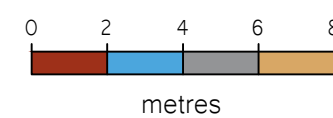
Indicates features to be demolished



Indicates proposed trees and hedges



Site Plan
Scale: 1:200



Landscaping Description	
Trees to include: T1 - Silver Birch 'Betula Pendula' T2 - Field Maple 'Acer Campestre' Size - 10 - 12cm Planted	All supporting stakes to new trees to penetrate min 600mm into soil to ensure stability. Proprietary adjustable tree ties to be used to accommodate tree growth. stakes to be installed and maintained for 18 - 36 month depending on condition of tree.
SP - Shrub Planting to include: Lonicera Pileata, Spiraea Godi Flame, Scenecio Greyii, Buddleja davidii C3 pot size, planting size 40-60cm, planted at 750mm ctrs	
Landscaping Notes - All planting, seeding or turfing as shown on the above landscaping plan are to be carried out in the first planting and seeding seasons following the occupation of the dwelling of the development, whichever is sooner, and any trees or plants which within a period of 5 years from the completion date, are to be removed and replaced with others of a similar size and species, unless the Local Planning Authority gives written consent to any variation.	
<ul style="list-style-type: none">Any works close to trees and/or hedgerows should be undertaken in accordance with the British Standard BS 5837: 2012 and National Joint Utilities Group Guidelines (NJUG4).Any works involving vegetation clearance including the removal of the brush pile and small section of hedgerow should avoid the bird breeding season (late February to August inclusive) to avoid damage to nesting species. If this is not acceptable, then a nesting bird survey should be undertaken by an experienced ecologist immediately prior to the start of site clearance commencement.It is recommended that guidelines from the Bat Conservation Trust and ILP (Institute of Lighting Professionals) on bats and artificial lighting are followed.It is recommended that the new sites include provision of nesting habitats in the form of nest boxes (see site plan).Clearance of onsite vegetation considered suitable to support hedgehogs will be avoided. If this is not practicable then clearance will be carried out by hand or under supervision, avoiding frosty days when hedgehogs may be hibernating.	

- General Notes
- All dimensions are shown in 'mm' unless otherwise stated.
 - The contractor, sub-contractors and suppliers must verify all dimensions on site prior to the commencement of any work.
 - This drawing is to be read in conjunction with all relevant engineers and specialist sub-contractors drawings and specifications.
 - Any discrepancies are to be brought to the designers attention.

Revisions		
A	Feb 2021	Changes Following Planners Comments
B	April 2021	Changes Following Ecology Report

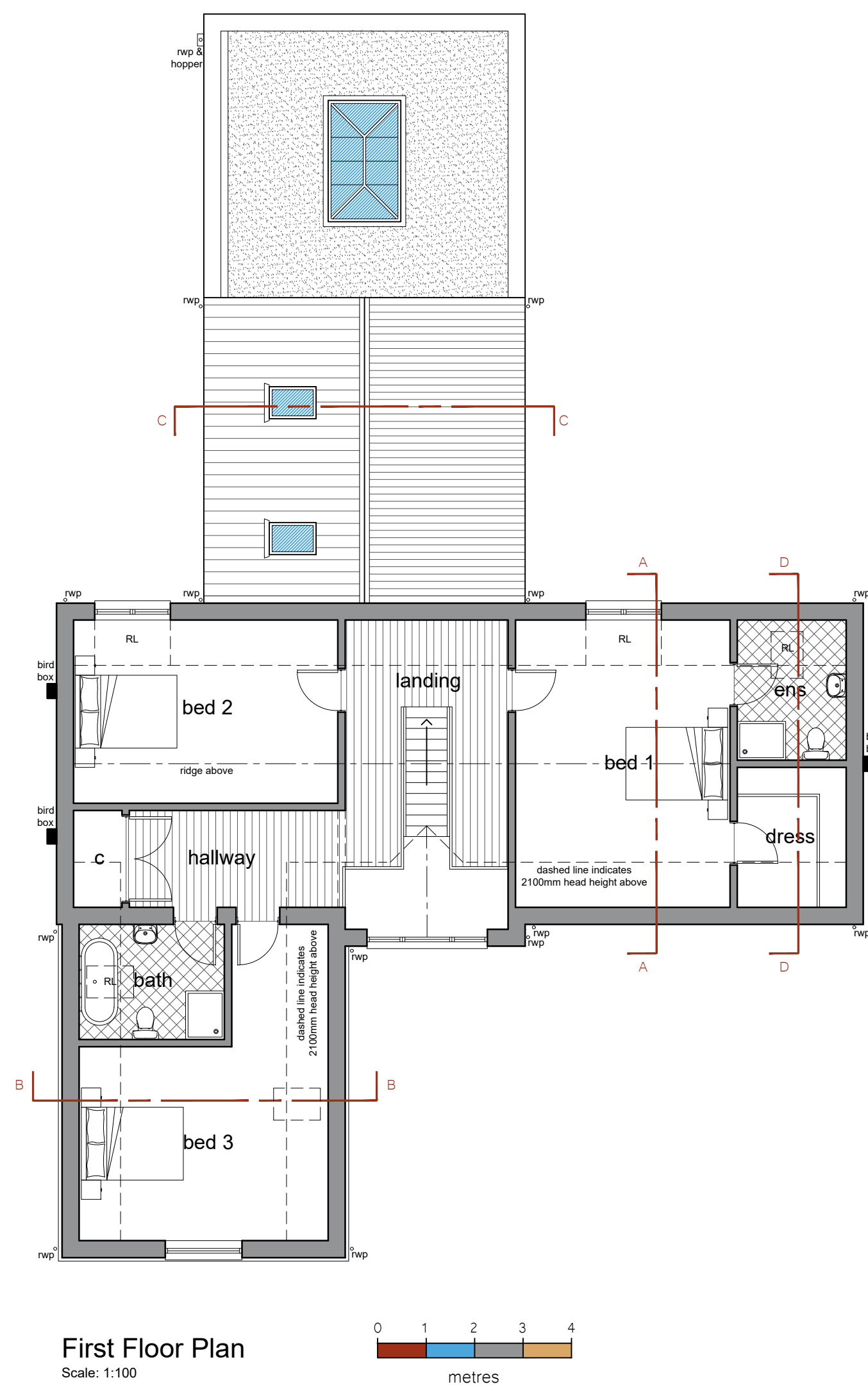
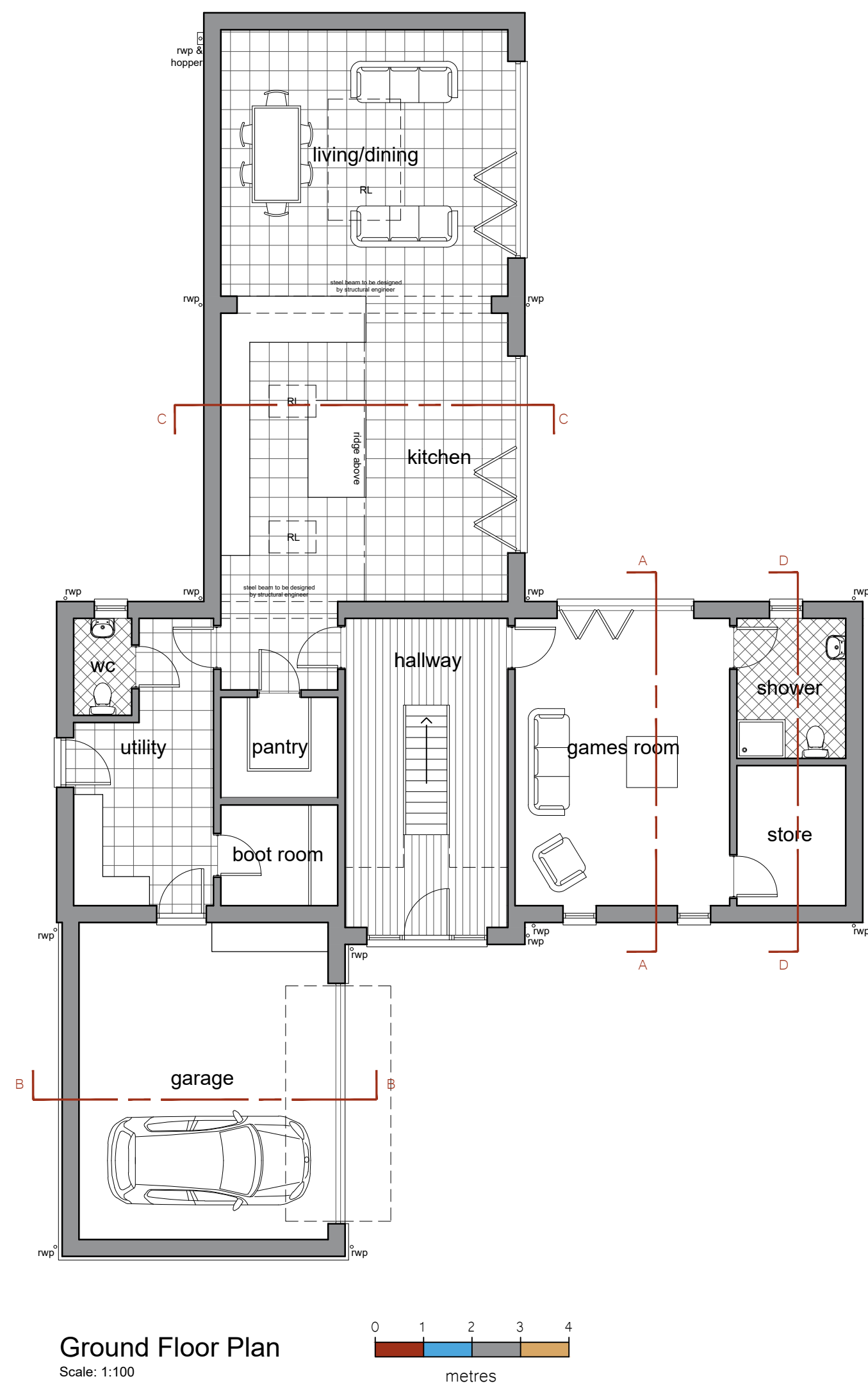
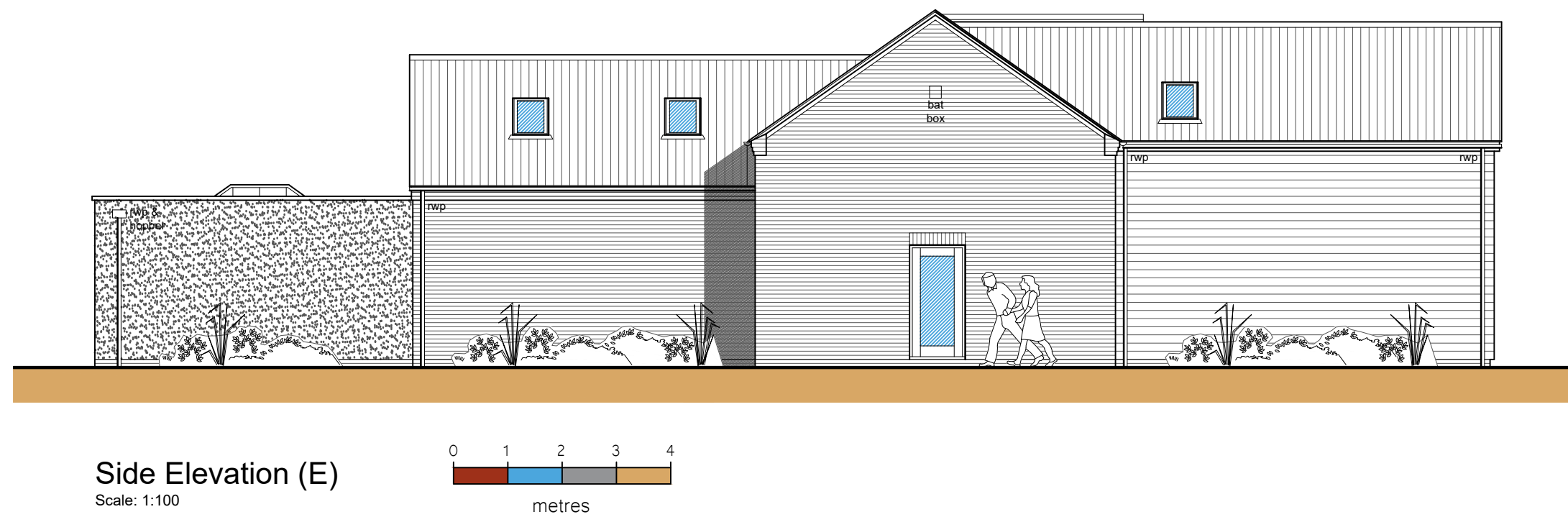
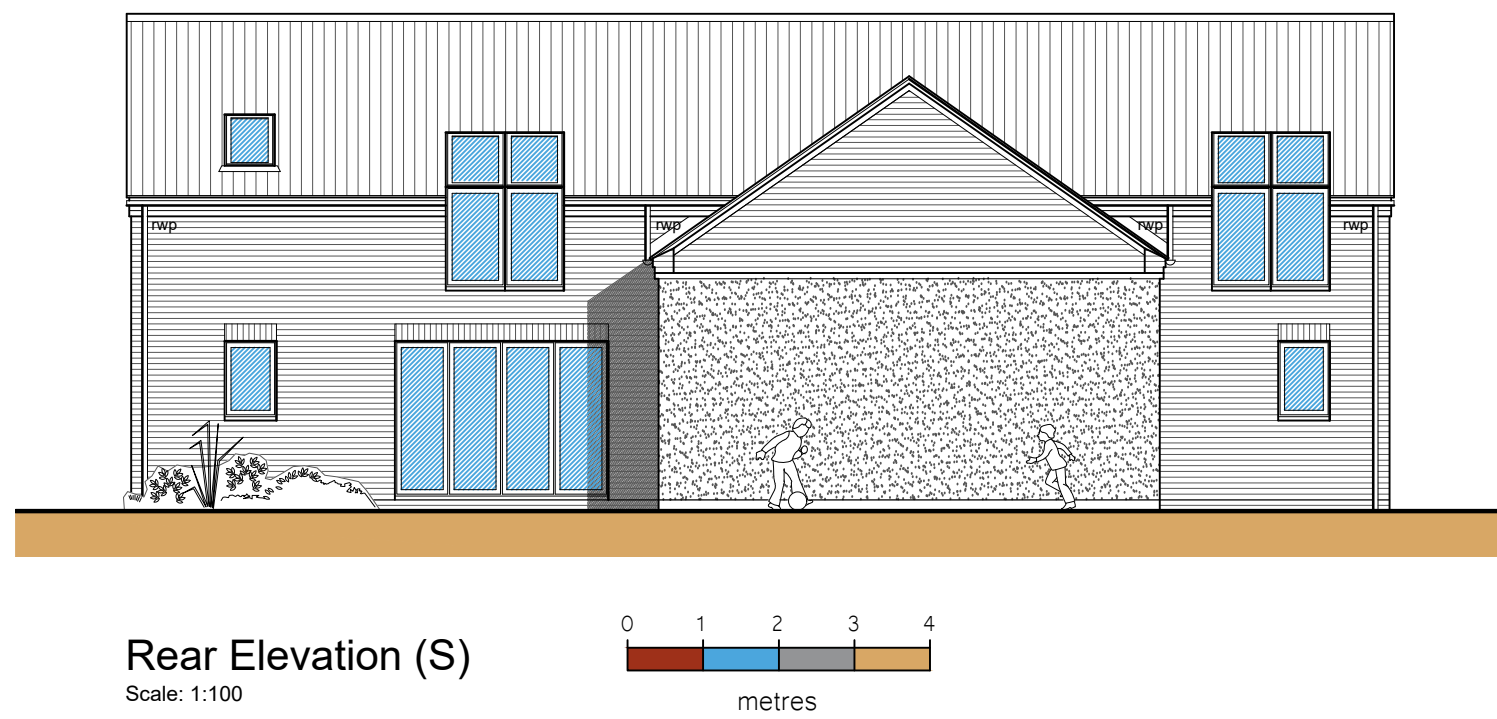
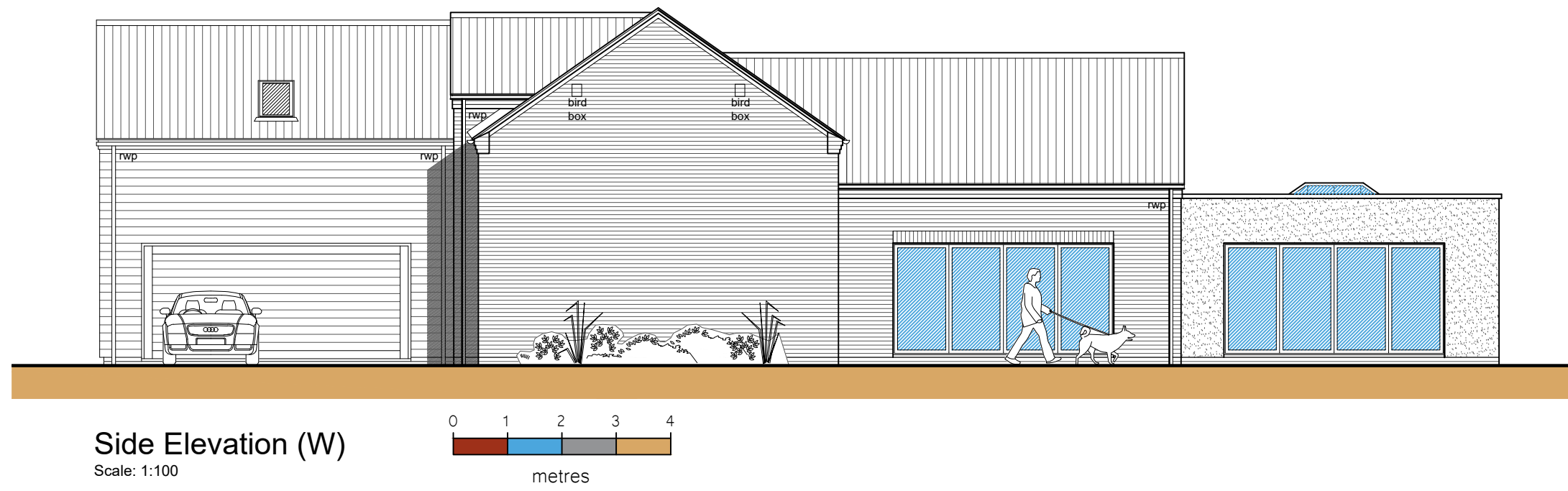
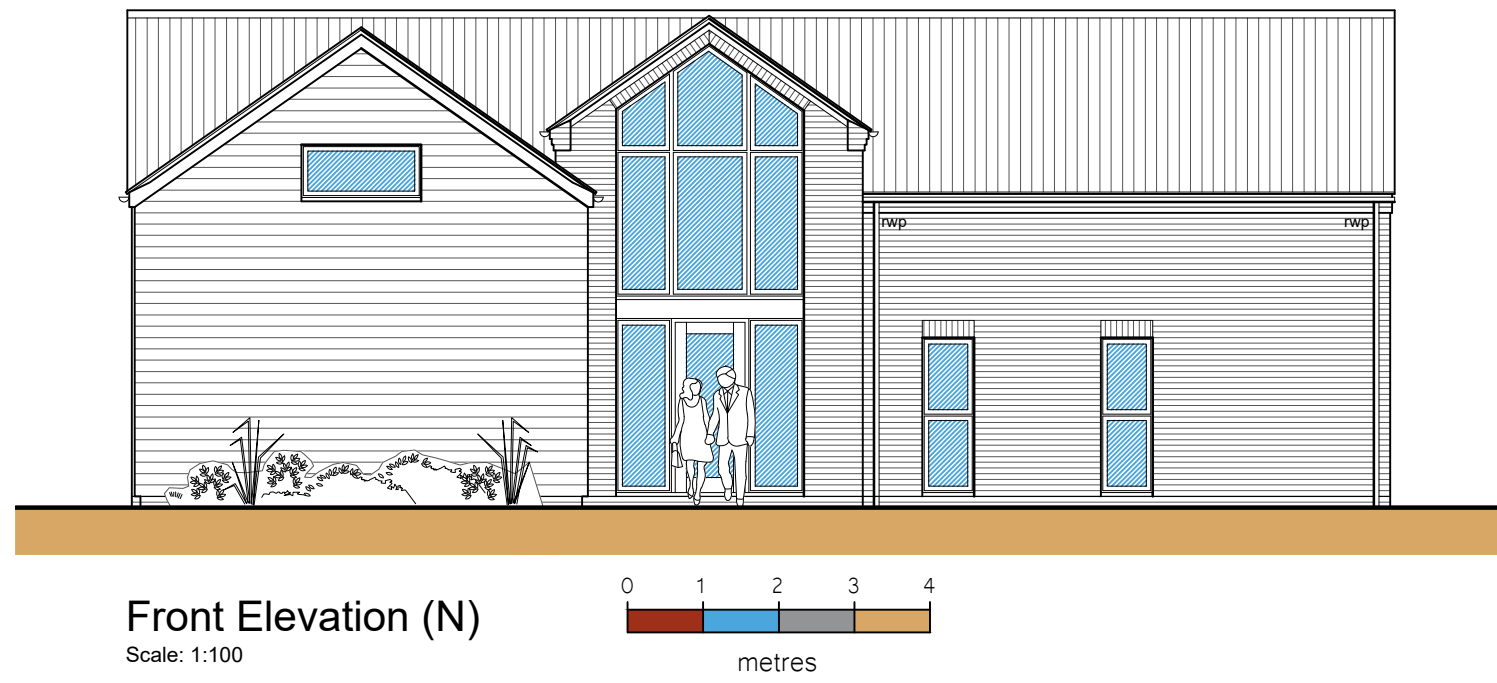
Drawings to be read in conjunction with
Greenwillows Associates Ltd Ecological Impact
Assessment. (NGR: TF 43255 16528)

Status
FOR APPROVAL

SWANN EDWARDS
ARCHITECTURE
Swann Edwards Architecture Limited, Swann Edwards Architecture,
Black Barn, Fen Road, Guyhirn, Wisbech, Cambs. PE13 4AA
t 01945 450694 e info@swannedwards.co.uk w www.swannedwards.co.uk

Job Title		Date	Drawn by
Proposed Dwelling		December 2020	JRB
Land West of Magnolia Cottage			Checked by
Plot 4, Kirkgate, Tydd St Giles			GE
For: Mr Sinnott			
Drawing Title		Job No.	Sheet Size
Planning Drawing		SE-1509	A1
Site & Location Plan		Dwg No. PP1000	Revision B

- General Notes
1. All dimensions are shown in 'mm' unless otherwise stated.
 2. The contractor, sub-contractors and suppliers must verify all dimensions on site prior to the commencement of any work.
 3. This drawing is to be read in conjunction with all relevant engineers and specialist sub-contractors drawings and specifications.
 4. Any discrepancies are to be brought to the designers attention.



ELEVATION KEY

- Hatch indicates proposed Vandersanden Facing Brick, Flemish Antique
- Hatch indicates proposed Sandtoft 20 / 20 Interlocking Clay Roof Tile - Antique Slate
- Hatch indicates proposed Hardie Plany Cladding - Midnight Black
- Hatch indicates proposed Anthracite Grey joinery
- Hatch indicates proposed Render to be confirmed by client

Revisions		
A	April 2021	Changes Following Ecology Report
B	June 2021	Changes Following Planning Feedback

Status

FOR APPROVAL

SWANN EDWARDS
ARCHITECTURE

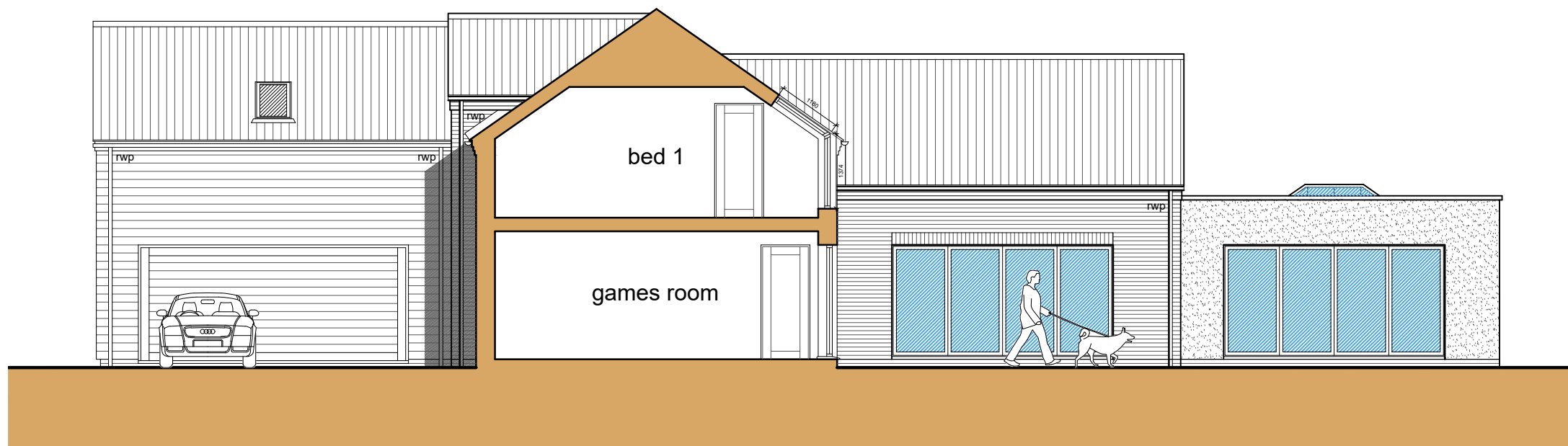
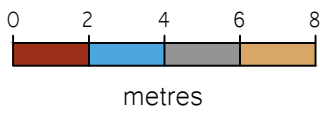
Swann Edwards Architecture Limited, Swann Edwards Architecture,
Black Barn, Fen Road, Guyhirn, Wisbech, Cambs. PE13 4AA
t 01945 450694 e info@swannedwards.co.uk w www.swannedwards.co.uk

Job Title Proposed Dwelling Lane West of Magnolia Cottage Plot 4, Kirkgate, Tydd St Giles For: Mr & Mrs Sinnott	Date December 2020	Drawn by JRB Checked by GE
Drawing Title Planning Drawing Floor Plans & Elevations	Job No. SE-1509 Dwg No. PP1100	Sheet Size A1 Revision B

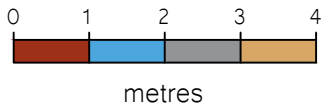
General Notes
1. All dimensions are shown in 'mm' unless otherwise stated.
2. The contractor, sub-contractors and suppliers must verify all dimensions on site prior to the commencement of any work.
3. This drawing is to be read in conjunction with all relevant engineers and specialist sub-contractors drawings and specifications.
4. Any discrepancies are to be brought to the designers attention.



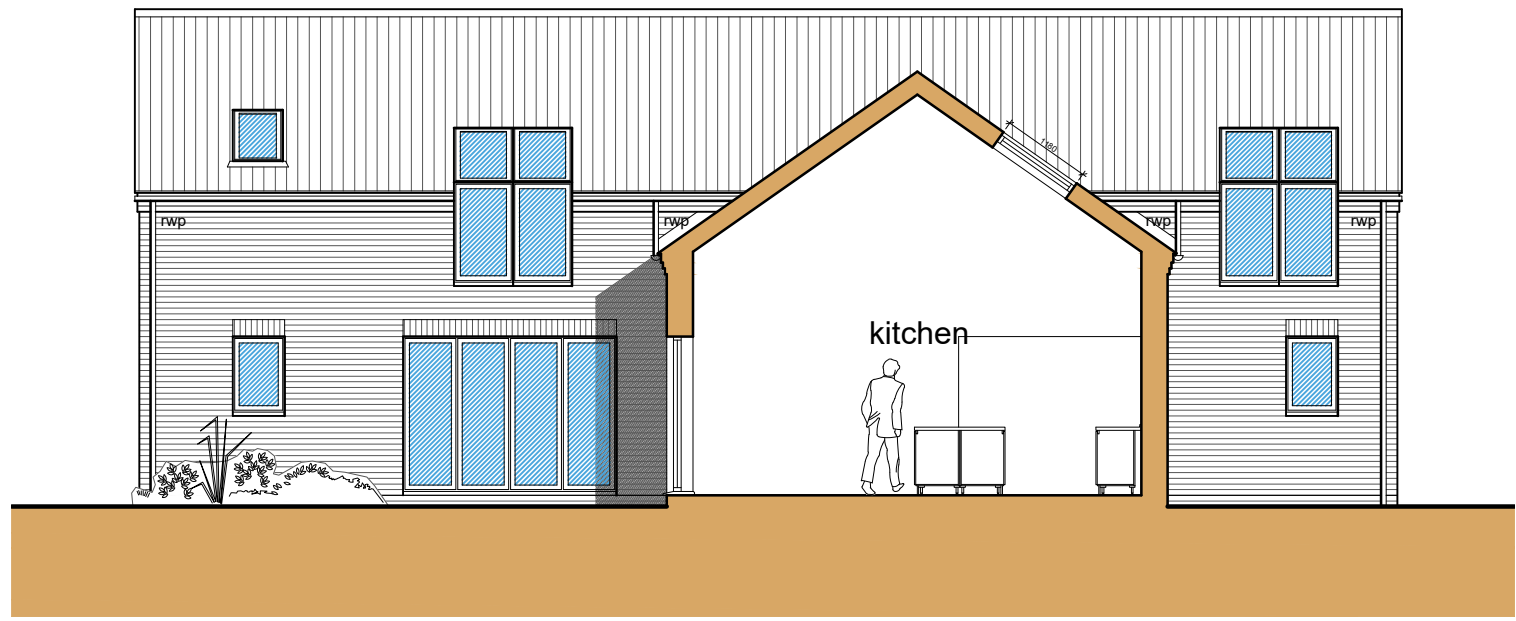
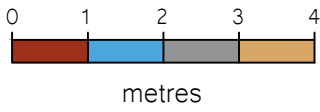
Street Scene
Scale: 1:200



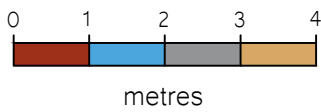
Section A-A
Scale: 1:100



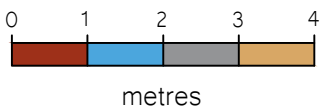
Section B-B
Scale: 1:100



Section C-C
Scale: 1:100



Section D-D
Scale: 1:100



Revisions		
A	April 2021	Sections
B	June 2021	Changes Following Planning Feedback

Status
FOR APPROVAL

SWANN EDWARDS
ARCHITECTURE

Swann Edwards Architecture Limited, Swann Edwards Architecture,
Black Barn, Fen Road, Guyhirn, Wisbech, Cambs. PE13 4AA
t 01945 450694 e info@swannedwards.co.uk w www.swannedwards.co.uk

Job Title Proposed Dwelling Lane West of Magnolia Cottage Plot 4, Kirkgate, Tydd St Giles For: Mr & Mrs Sinnott	Date December 2020	Drawn by JRB Checked by GE
	Job No. SE-1509 Dwg No. PP1001	Sheet Size A1 Revision B

Tydd St Giles Parish Council

Receipts & Payments Summary as at 31.3.21

Income

FDC Precept	£	6,000.00
FDC Concurrent Functions Grant	£	-
Allotment Rents	£	-
Allotment Rates	£	-
Community Centre	£	-
Grants	£	-
Donations	£	-
Recycling Credits	£	-
Bank Interest	£	0.82
VAT Refunds	£	-
Miscellaneous	£	-

Total Income £ **6,000.82**

Expenditure

Clerk's Salary	£	2,148.09
Fees	£	170.00
Subscriptions	£	516.18
Admin Expenses	£	-
Insurance	£	478.80
Drainage Rates	£	482.15
Recreation Ground	£	251.04
Churchyard	£	4,480.00
Community Centre	£	93.38
Street Lights	£	-
Section 137 Payments	£	-
Parish Land	£	-
Foul Anchor	£	-
LHI Projects	£	528.00
Recoverable VAT	£	955.71

Total Expenditure £ **10,103.35**

Summary

Total Income	£	6,000.82
LESS Total Expenditure	£	10,103.35

Net Surplus or Deficit **-£ 4,102.53**

Balance Sheet

Balance B/fwd	£	39,075.13
Surplus or Deficit	-£	4,102.53

Balance C/fwd £ **34,972.60**

Represented by

Barclays Current Account	£	4,258.51
Barclays Business Saver	£	30,714.09
Cash / Cheques	£	-

£ 34,972.60